

**SUPERFICIES ÚTILES**

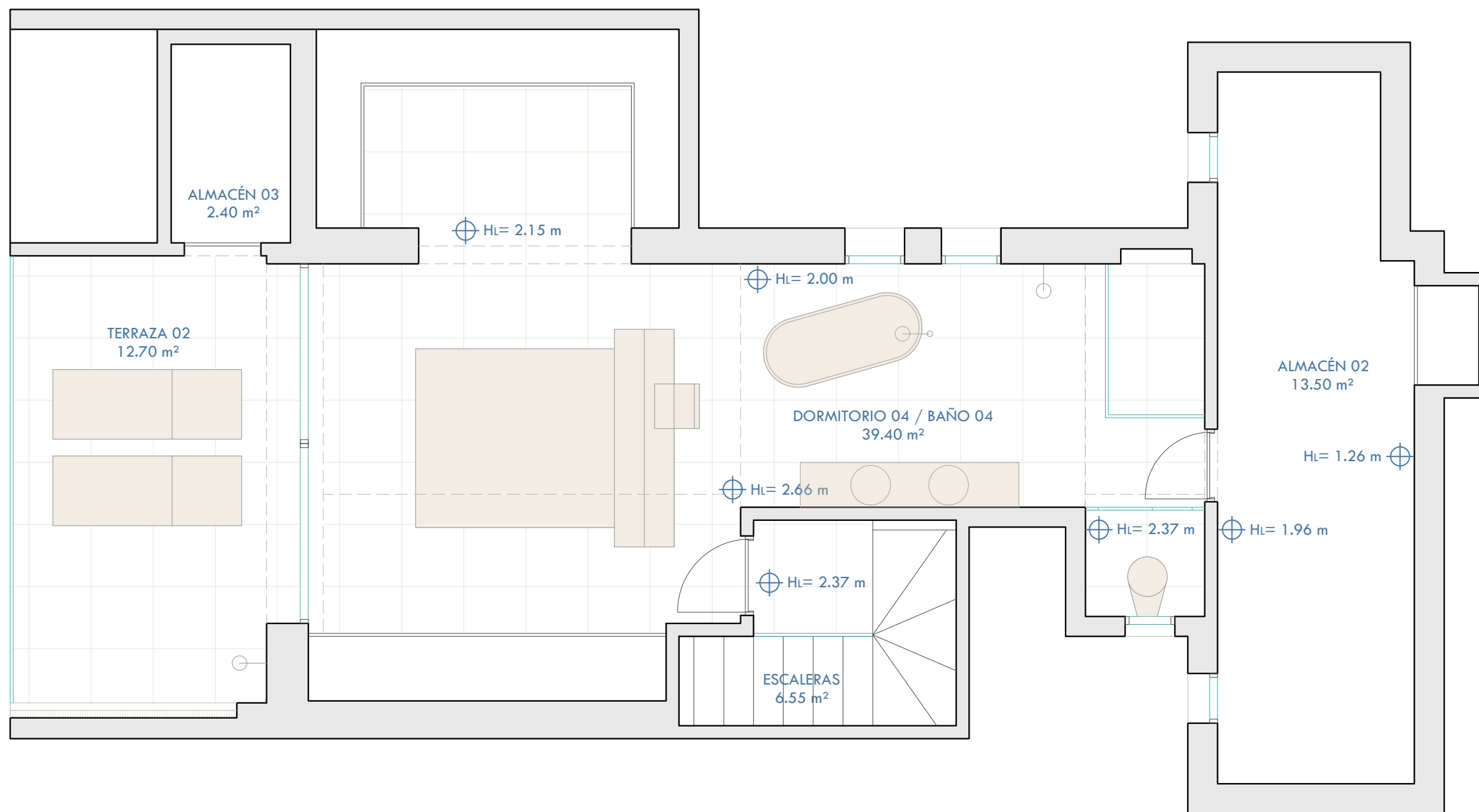
|  | VIVIENDA                    | TERRAZA              |
|--|-----------------------------|----------------------|
| PLANTA SEGUNDA                           | 99,35 m <sup>2</sup>        | 27,50 m <sup>2</sup> |
| PLANTA BAJO CUBIERTA                     | 55,30 m <sup>2</sup>        | 12,70 m <sup>2</sup> |
| <b>TOTAL SUPERFICIE ÚTIL SIN TERRAZA</b> | <b>154,65 m<sup>2</sup></b> |                      |
| <b>TOTAL SUPERFICIE ÚTIL CON TERRAZA</b> | <b>194,85 m<sup>2</sup></b> |                      |

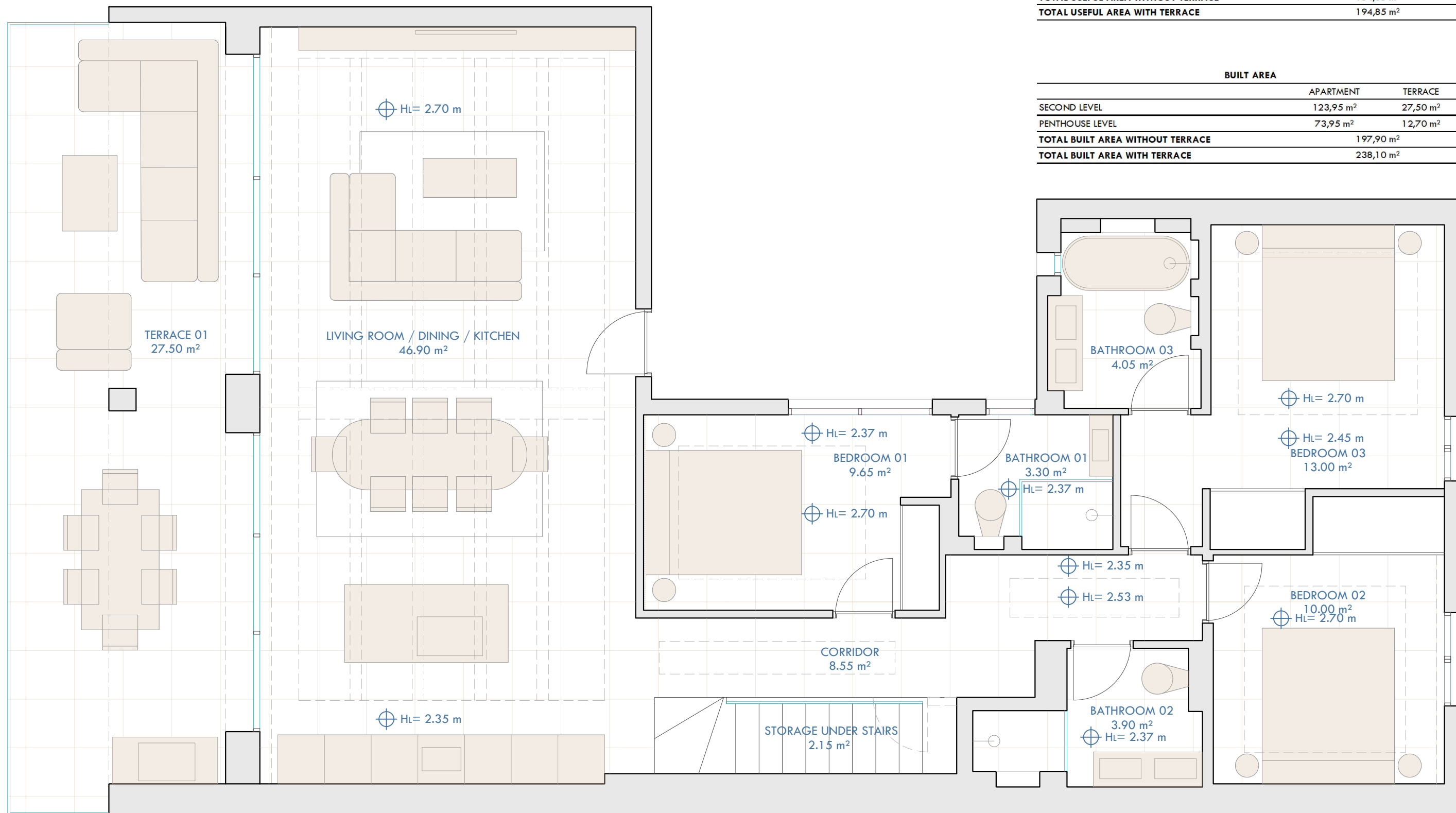
**SUPERFICIES CONSTRUIDAS**

|  | VIVIENDA                    | TERRAZA              |
|--|-----------------------------|----------------------|
| PLANTA SEGUNDA                                 | 123,95 m <sup>2</sup>       | 27,50 m <sup>2</sup> |
| PLANTA BAJO CUBIERTA                           | 73,95 m <sup>2</sup>        | 12,70 m <sup>2</sup> |
| <b>TOTAL SUPERFICIE CONSTRUIDA SIN TERRAZA</b> | <b>197,90 m<sup>2</sup></b> |                      |
| <b>TOTAL SUPERFICIE CONSTRUIDA CON TERRAZA</b> | <b>238,10 m<sup>2</sup></b> |                      |

| SUPERFICIES ÚTILES                       |                       |                      |
|--|-----------------------|----------------------|
|  | VIVIENDA              | TERRAZA              |
| PLANTA SEGUNDA                           | 99,35 m <sup>2</sup>  | 27,50 m <sup>2</sup> |
| PLANTA BAJO CUBIERTA                     | 55,30 m <sup>2</sup>  | 12,70 m <sup>2</sup> |
| <b>TOTAL SUPERFICIE ÚTIL SIN TERRAZA</b> | 154,65 m <sup>2</sup> |                      |
| <b>TOTAL SUPERFICIE ÚTIL CON TERRAZA</b> | 194,85 m <sup>2</sup> |                      |

| SUPERFICIES CONSTRUIDAS                        |                       |                      |
|--|-----------------------|----------------------|
|  | VIVIENDA              | TERRAZA              |
| PLANTA SEGUNDA                                 | 123,95 m <sup>2</sup> | 27,50 m <sup>2</sup> |
| PLANTA BAJO CUBIERTA                           | 73,95 m <sup>2</sup>  | 12,70 m <sup>2</sup> |
| <b>TOTAL SUPERFICIE CONSTRUIDA SIN TERRAZA</b> | 197,90 m <sup>2</sup> |                      |
| <b>TOTAL SUPERFICIE CONSTRUIDA CON TERRAZA</b> | 238,10 m <sup>2</sup> |                      |





| USEFUL AREA                              |                             |                      |
|--|-----------------------------|----------------------|
|  | APARMENT                    | TERRACE              |
| SECOND LEVEL                             | 99,35 m <sup>2</sup>        | 27,50 m <sup>2</sup> |
| PENTHOUSE LEVEL                          | 55,30 m <sup>2</sup>        | 12,70 m <sup>2</sup> |
| <b>TOTAL USEFUL AREA WITHOUT TERRACE</b> | <b>154,65 m<sup>2</sup></b> |                      |
| <b>TOTAL USEFUL AREA WITH TERRACE</b>    | <b>194,85 m<sup>2</sup></b> |                      |

| BUILT AREA                              |                             |                      |
|---|-----------------------------|----------------------|
|   | APARMENT                    | TERRACE              |
| SECOND LEVEL                            | 123,95 m <sup>2</sup>       | 27,50 m <sup>2</sup> |
| PENTHOUSE LEVEL                         | 73,95 m <sup>2</sup>        | 12,70 m <sup>2</sup> |
| <b>TOTAL BUILT AREA WITHOUT TERRACE</b> | <b>197,90 m<sup>2</sup></b> |                      |
| <b>TOTAL BUILT AREA WITH TERRACE</b>    | <b>238,10 m<sup>2</sup></b> |                      |

| USEFUL AREA                              |                       |                      |
|--|-----------------------|----------------------|
|  | APARMENT              | TERRACE              |
| SECOND LEVEL                             | 99,35 m <sup>2</sup>  | 27,50 m <sup>2</sup> |
| PENTHOUSE LEVEL                          | 55,30 m <sup>2</sup>  | 12,70 m <sup>2</sup> |
| <b>TOTAL USEFUL AREA WITHOUT TERRACE</b> | 154,65 m <sup>2</sup> |                      |
| <b>TOTAL USEFUL AREA WITH TERRACE</b>    | 194,85 m <sup>2</sup> |                      |

| BUILT AREA                              |                       |                      |
|---|-----------------------|----------------------|
|   | APARMENT              | TERRACE              |
| SECOND LEVEL                            | 123,95 m <sup>2</sup> | 27,50 m <sup>2</sup> |
| PENTHOUSE LEVEL                         | 73,95 m <sup>2</sup>  | 12,70 m <sup>2</sup> |
| <b>TOTAL BUILT AREA WITHOUT TERRACE</b> | 197,90 m <sup>2</sup> |                      |
| <b>TOTAL BUILT AREA WITH TERRACE</b>    | 238,10 m <sup>2</sup> |                      |

