

An aerial photograph of a coastal city at sunset. The sky is a mix of blue and orange, with wispy clouds. In the background, there are mountains and a large body of water. The city below is densely packed with buildings and trees, with some taller buildings visible in the distance. The overall scene is peaceful and scenic.

18 INDIVIDUALLY DESIGNED SUSTAINABLE VILLAS

VILLA
N°1

VILLA N°1

Villa N°1 sits on a large corner south-east facing plot with fabulous views over Marbella. The carefully thought-out orientation of the villa ensures uninterrupted sea views and complete privacy. The villa has a large pool and generous terraces, making the most of the gorgeous Marbella climate. In key parts of the villa the windows disappear into the walls, framing the undisturbed, panoramic views of the idyllic natural surroundings. The master bedroom suite is designed along the lines of a 5-star hotel suite and has a large walk-in wardrobe and its own private terrace. The carport has space for two cars and the large garden can accommodate an organic vegetable plot, if so desired.





VILLA N°1

GROUND FLOOR	143,18 m ²
FIRST FLOOR	112,81 m ²
BASEMENT	295,89 m ²
TOTAL	551,88 m²

PORCHES	3,29 m ²
TERRACES	45,64 m ²
PERGOLAS	82,64 m ²
CARPORT	39,33 m ²
COMMUNAL AREAS	8,70 m ²

TOTAL CONSTRUCTED	731,48 m²
--------------------------	-----------------------------

PLOT	2.347,00 m²
-------------	-------------------------------

GARDEN	347,84 m ²
SWIMMING POOL	56,54 m ²

TOTAL USEFUL AREA DECREE	530,08 m²
218/2005	

These images are not contractual but only for illustrative purposes. The images are subject to technical, legal or commercial modifications approved by the project management or the competent authority. The 3D images corresponding to the facades, common elements, and the rest of the spaces are merely indicative and will be subject to verification or Modification in the technical projects. The furniture of the 3D images is not included and the equipment of the villas will be indicated in the corresponding building and quality specifications. The energy certification corresponds with the one established in the project in process. All the information and documentation will be provided according to the terms established in the Royal Decree 515/1989 and in the rest of the autonomous or state regulations currently in force that could complement the Mentioned Decree.



VILLA N°1

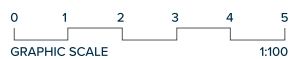
GROUND FLOOR

LIVING AREA

ENTRANCE	16.55 m ²
STAIRS	6.50 m ²
LOUNGE	
DINING-KITCHEN	83.42 m ²
BATHROOM 3	5.65 m ²
BEDROOM 3	12.58 m ²
TOTAL	124,70 m²

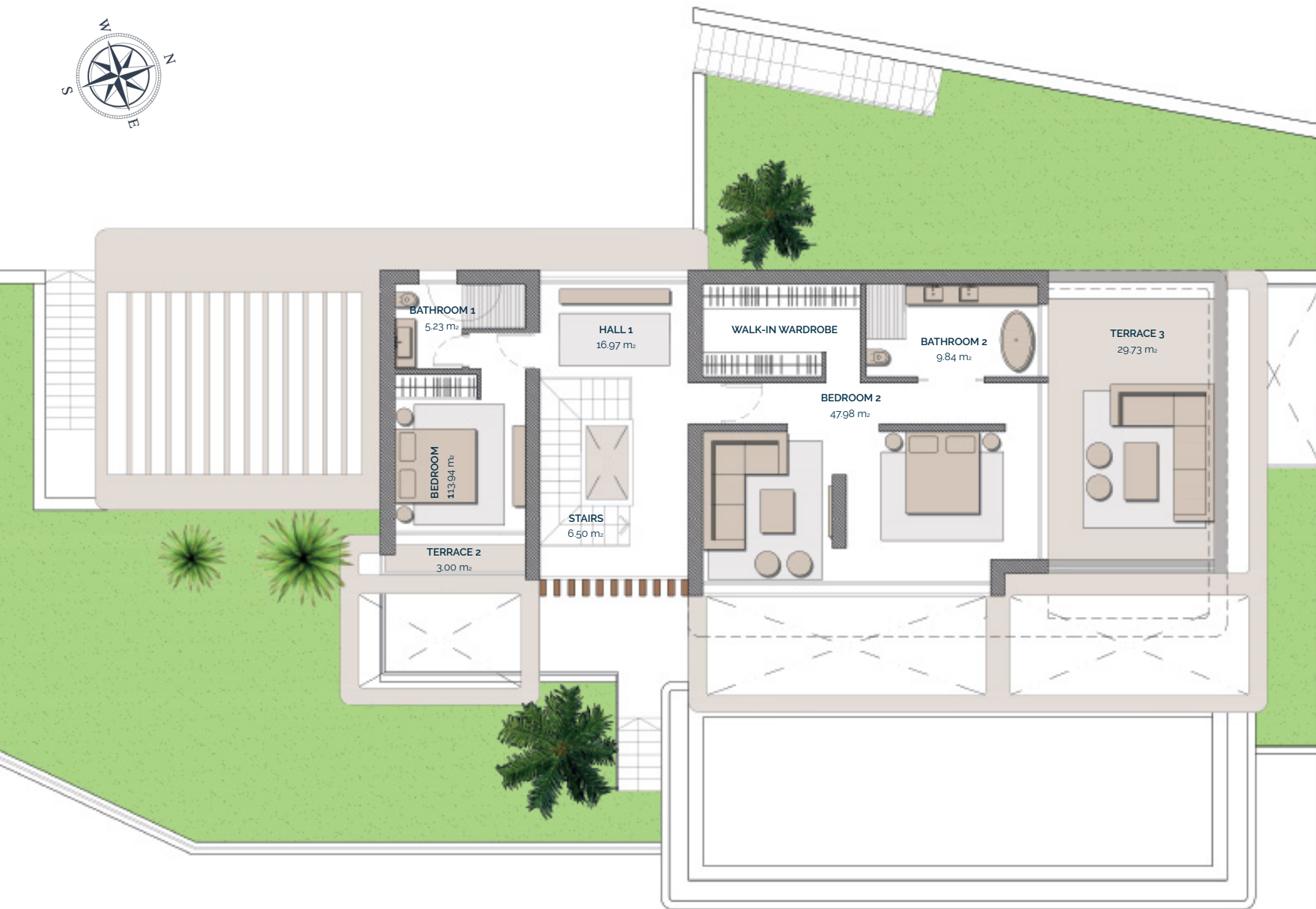
ACCESS & TERRACES

PORCH ACCESS	3.29 m ²
PARKING (PERGOLA)	39.01 m ²
TERRACE 1	8.52 m ²
PERGOLA 1	52.29 m ²
PERGOLA 2	11.51 m ²
TOTAL	114,62 m²



Entrance	1
	0
	-1

These images are not contractual but only for illustrative purposes. The images are subject to technical, legal or commercial modifications approved by the project management or the competent authority. The 3D images corresponding to the facades, common elements, and the rest of the spaces are merely indicative and will be subject to verification or Modification in the technical projects. The furniture of the 3D images is not included and the equipment of the villas will be indicated in the corresponding building and quality specifications. The energy certification corresponds with the one established in the project in process. All the information and documentation will be provided according to the terms established in the Royal Decree 515/1989 and in the rest of the autonomous or state regulations currently in force that could complement the Mentioned Decree.



VILLA N°1

FIRST FLOOR

BEDROOMS

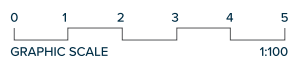
HALL 1	16,97 m ²
STAIRS	6,50 m ²
BATHROOM 1	5,23 m ²
BEDROOM 1	13,94 m ²
BEDROOM 2	47,98 m ²
BATHROOM 2	9,84 m ²

TOTAL 100,46 m²

TERRACES

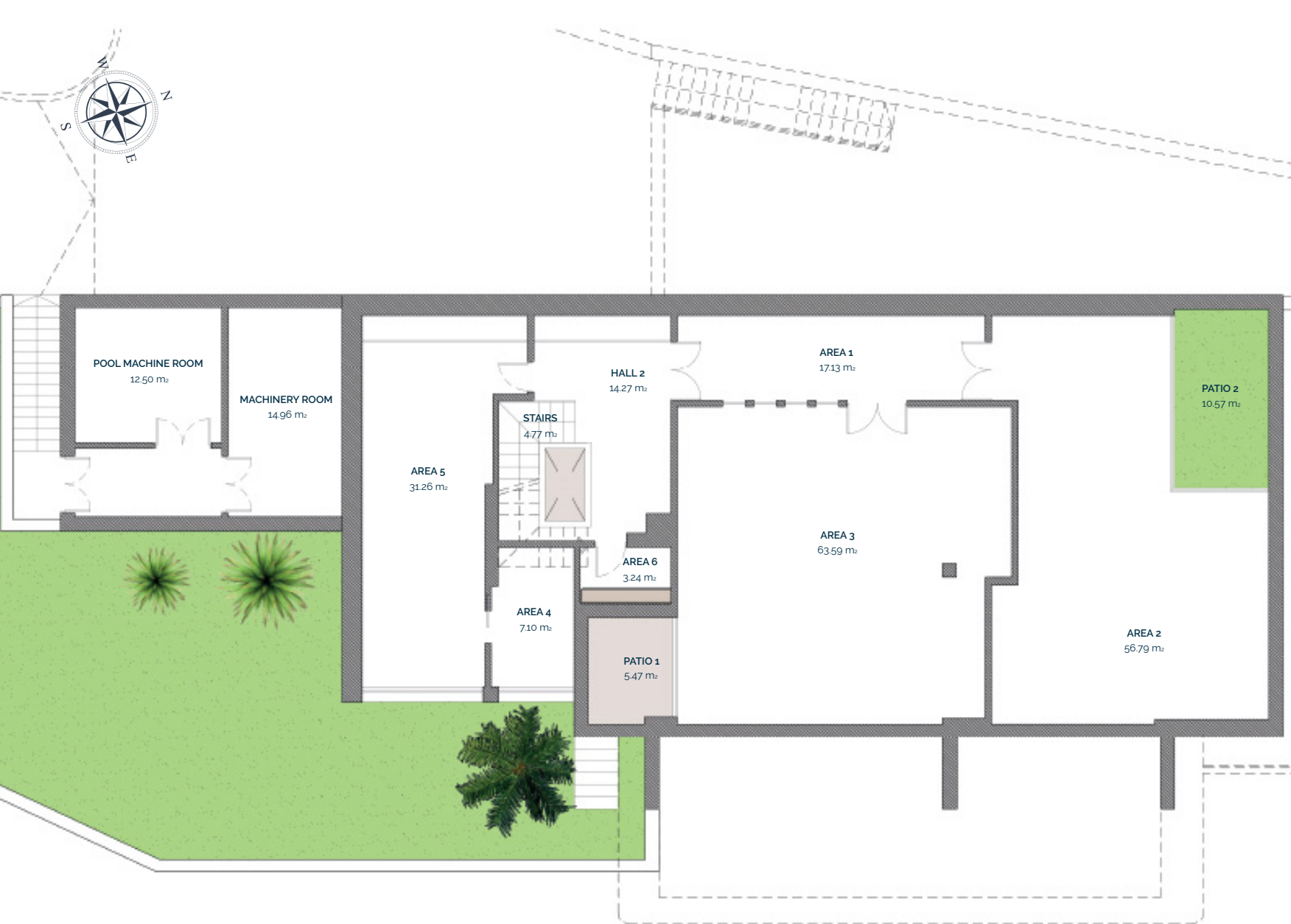
TERRACE 2	3,00 m ²
TERRACE 3	29,73 m ²

TOTAL 32,73 m²



	1
Entrance	0
	-1

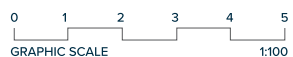
These images are not contractual but only for illustrative purposes. The images are subject to technical, legal or commercial modifications approved by the project management or the competent authority. The 3D images corresponding to the facades, common elements, and the rest of the spaces are merely indicative and will be subject to verification or Modification in the technical projects. The furniture of the 3D images is not included and the equipment of the villas will be indicated in the corresponding building and quality specifications. The energy certification corresponds with the one established in the project in process. All the information and documentation will be provided according to the terms established in the Royal Decree 515/1989 and in the rest of the autonomous or state regulations currently in force that could complement the Mentioned Decree.



VILLA N°1

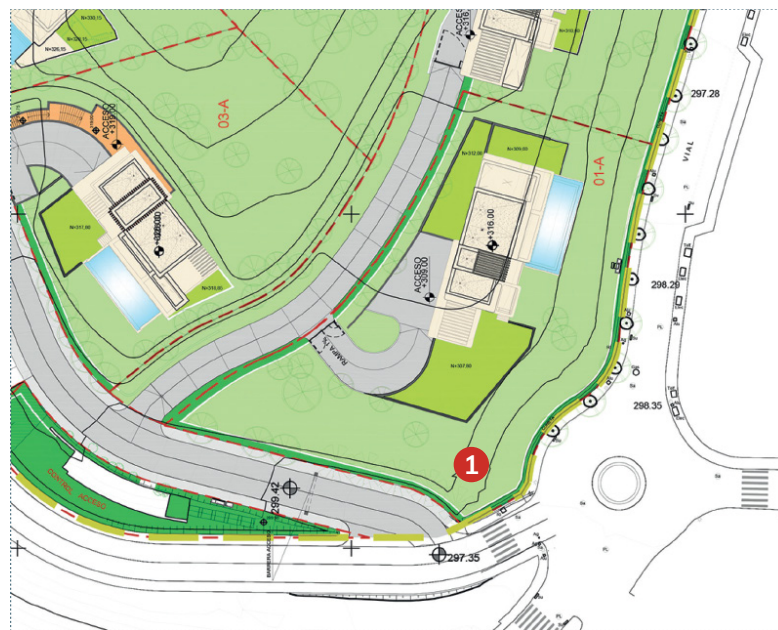
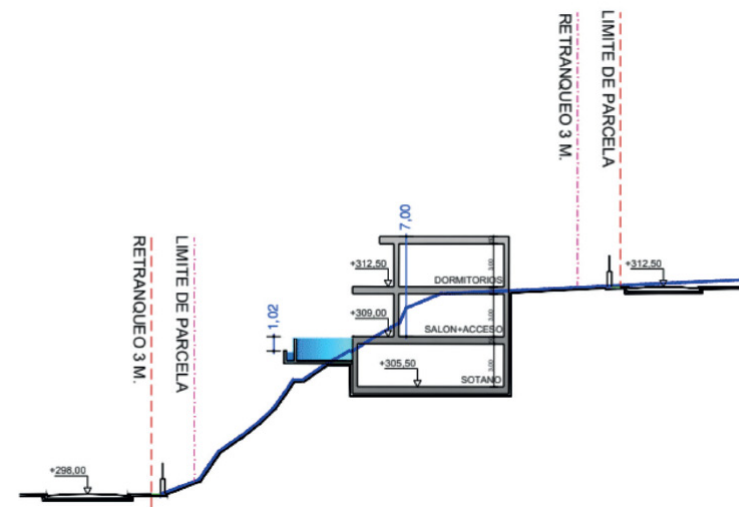
BASEMENT

HALL 2	14,27 m ²
AREA 1	17,13 m ²
AREA 2	56,79 m ²
AREA 3	63,59 m ²
AREA 4	7,10 m ²
AREA 5	31,26 m ²
AREA 6	3,24 m ²
POOL MACHINE ROOM	12,50 m ²
MACHINERY ROOM	14,96 m ²
STAIRS	4,77 m ²
PATIO	1,80 m ²
PATIO 1	5,47 m ²
PATIO 2	10,57 m ²
TOTAL	243,45 m²



Entrance	1
	0
	-1

These images are not contractual but only for illustrative purposes. The images are subject to technical, legal or commercial modifications approved by the project management or the competent authority. The 3D images corresponding to the facades, common elements, and the rest of the spaces are merely indicative and will be subject to verification or Modification in the technical projects. The furniture of the 3D images is not included and the equipment of the villas will be indicated in the corresponding building and quality specifications. The energy certification corresponds with the one established in the project in process. All the information and documentation will be provided according to the terms established in the Royal Decree 515/1989 and in the rest of the autonomous or state regulations currently in force that could complement the Mentioned Decree.





An aerial photograph of a coastal town at sunset. The sky is a mix of blue and orange, with wispy clouds. In the background, there are mountains. The town below is densely packed with buildings and trees, with a large body of water visible in the distance. The text "18 INDIVIDUALLY DESIGNED SUSTAINABLE VILLAS" is centered in white, bold, uppercase letters.

**18 INDIVIDUALLY
DESIGNED SUSTAINABLE
VILLAS**

VILLA
Nº2

VILLA N°2

Villa N°2 sits on a corner south-east facing plot that has fabulous views overlooking Marbella.

The carefully thought-out orientation of the villa ensures uninterrupted sea views and complete privacy. The villa has a large pool and generous terraces, making the most of the fabulous Marbella climate. In key parts of the villa the windows disappear into the walls, framing the undisturbed, panoramic views of the idyllic natural surroundings. There are four spacious ensuite bedrooms, with the Master Suite enjoying its own private terrace. Built over three floors with the entrance and communal living areas on the first floor and the bedrooms on the ground floor, this is a magnificent family home.





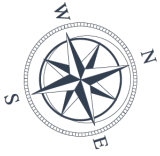
VILLA N°2

GROUND FLOOR	110,78 m ²
FIRST FLOOR	136,14 m ²
BASEMENT	251,36 m ²
TOTAL	498,28 m²

PORCHES	3,29 m ²
TERRACES	38,18 m ²
PERGOLAS	46,00 m ²
CARPORT	39,33 m ²
COMMON AREA	8,70 m ²
TOTAL	650,02 m²

PLOT	2.406,00 m²
GARDEN	106,64 m ²
SWIMMING POOL	63,78 m ²
TOTAL USEFUL AREA DECREE 218/2005	472,71 m²

These images are not contractual but only for illustrative purposes. The images are subject to technical, legal or commercial modifications approved by the project management or the competent authority. The 3D images corresponding to the facades, common elements, and the rest of the spaces are merely indicative and will be subject to verification or Modification in the technical projects. The furniture of the 3D images is not included and the equipment of the villas will be indicated in the corresponding building and quality specifications. The energy certification corresponds with the one established in the project in process. All the information and documentation will be provided according to the terms established in the Royal Decree 515/1989 and in the rest of the autonomous or state regulations currently in force that could complement the Mentioned Decree.



VILLA N°2

FIRST FLOOR

LIVING AREA

MAIN HALL	16,35 m ²
STAIRS	6,50 m ²
LOUNGE-DINING-KITCHEN	84,95 m ²
BATHROOM 1	5,65 m ²
BEDROOM 1	12,49 m ²

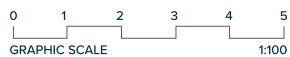
TOTAL 126,60 m²

ACCESS & TERRACES

PORCH ACCESS	3,29 m ²
PARKING (PERGOLA)	39,60 m ²
TERRACE 1	6,55 m ²
PERGOLA 1	49,03 m ²
SWIMMING POOL	63,78 m ²

TOTAL 162,25 m²

These images are not contractual but only for illustrative purposes. The images are subject to technical, legal or commercial modifications approved by the project management or the competent authority. The 3D images corresponding to the facades, common elements, and the rest of the spaces are merely indicative and will be subject to verification or Modification in the technical projects. The furniture of the 3D images is not included and the equipment of the villas will be indicated in the corresponding building and quality specifications. The energy certification corresponds with the one established in the project in process. All the information and documentation will be provided according to the terms established in the Royal Decree 515/1989 and in the rest of the autonomous or state regulations currently in force that could complement the Mentioned Decree.



Entrance	1
	0
	-1



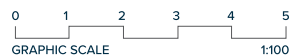
VILLA N°2 GROUND FLOOR

BEDROOMS

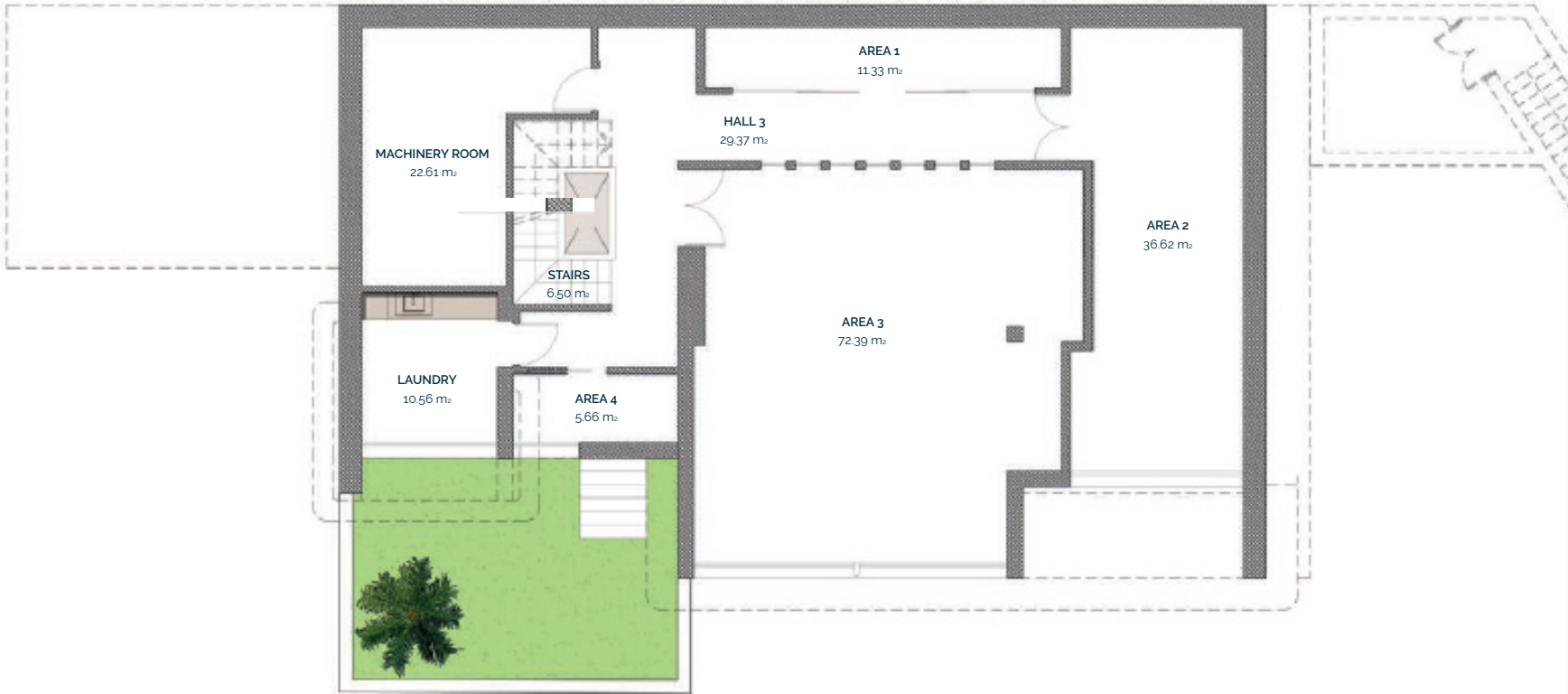
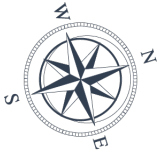
HALL 1	16,67 m ²
STAIRS	6,50 m ²
BATHROOM 2	4,68 m ²
BEDROOM 2	17,65 m ²
BATHROOM 3	4,68 m ²
BEDROOM 3	16,32 m ²
BATHROOM 4	5,00 m ²
BEDROOM 4	19,69 m ²
TOTAL	91,85 m²

PERGOLAS & TERRACES

PERGOLA 2	8,30 m ²
TERRACE 2	9,25 m ²
TERRACE 3	17,73 m ²
POOL MACHINE ROOM	11,09 m ²
TOTAL	46,25 m²



These images are not contractual but only for illustrative purposes. The images are subject to technical, legal or commercial modifications approved by the project management or the competent authority. The 3D images corresponding to the facades, common elements, and the rest of the spaces are merely indicative and will be subject to verification or Modification in the technical projects. The furniture of the 3D images is not included and the equipment of the villas will be indicated in the corresponding building and quality specifications. The energy certification corresponds with the one established in the project in process. All the information and documentation will be provided according to the terms established in the Royal Decree 515/1989 and in the rest of the autonomous or state regulations currently in force that could complement the Mentioned Decree.



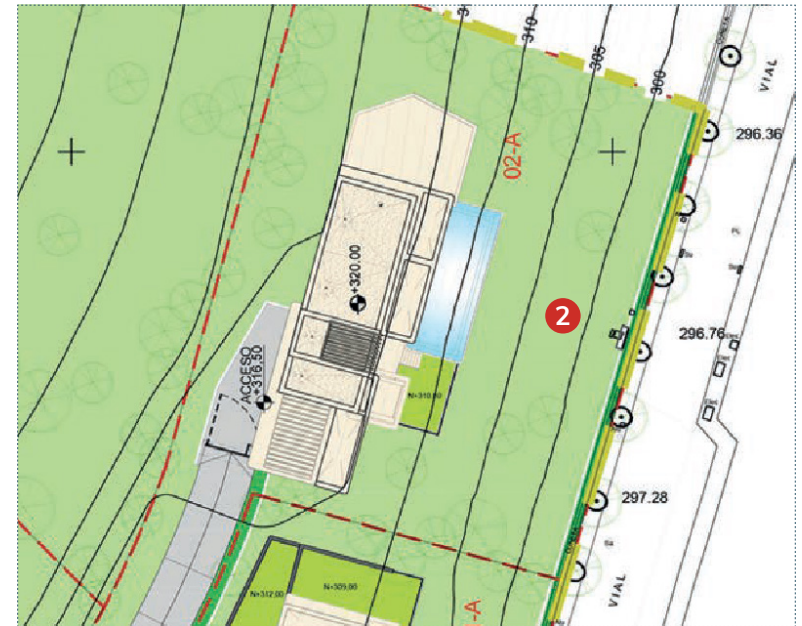
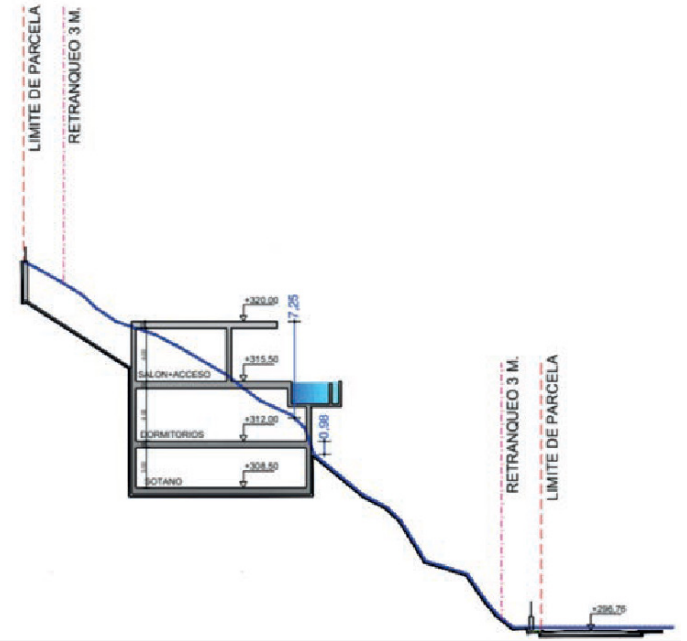
Entrance	1
	0
	-1

VILLA N°2

BASEMENT

HALL 3	29,37 m ²
AREA 1	11,33 m ²
AREA 2	36,62 m ²
AREA 3	72,39 m ²
AREA 4	5,66 m ²
STAIRS	6,50 m ²
MACHINERY ROOM	22,61 m ²
LAUNDRY	10,56 m ²
PATIO	1,80 m ²
TOTAL	196,84 m²

These images are not contractual but only for illustrative purposes. The images are subject to technical, legal or commercial modifications approved by the project management or the competent authority. The 3D images corresponding to the facades, common elements, and the rest of the spaces are merely indicative and will be subject to verification or Modification in the technical projects. The furniture of the 3D images is not included and the equipment of the villas will be indicated in the corresponding building and quality specifications. The energy certification corresponds with the one established in the project in process. All the information and documentation will be provided according to the terms established in the Royal Decree 515/1989 and in the rest of the autonomous or state regulations currently in force that could complement the Mentioned Decree.





An aerial photograph of a coastal town at sunset. The sky is a mix of blue and orange, with wispy clouds. In the background, there are mountains. The town below is densely packed with buildings and trees, with the ocean visible in the distance.

18 INDIVIDUALLY DESIGNED SUSTAINABLE VILLAS

VILLA
Nº7

VILLA N°7

Villa N°7 sits on a south-facing plot with amazing views across the Mediterranean to Gibraltar. The carefully thought-out orientation of the villa ensures uninterrupted sea views and complete privacy. The villa has generous terraces, making the most of the fabulous Marbella climate, and an ample garden with enough room for an organic vegetable plot if so desired. In key parts of the villa the windows disappear into the walls, framing the undisturbed, panoramic views of the idyllic natural surroundings. There are four spacious ensuite bedrooms, with the Master Suite and two guest bedrooms enjoying their own private terraces. Built over four floors with a basement of nearly 200 metres squared, this is a perfect family home.





VILLA N°7

SECOND FLOOR	20,94 m ²
FIRST FLOOR	144,29 m ²
GROUND FLOOR	111,36 m ²
BASEMENT	258,00 m ²

TOTAL 534,59 m²

TERRACES	39,16 m ²
PERGOLAS	48,69 m ²
CARPORT	41,44 m ²
COMMON AREA	8,70 m ²

TOTAL 672,58 m²

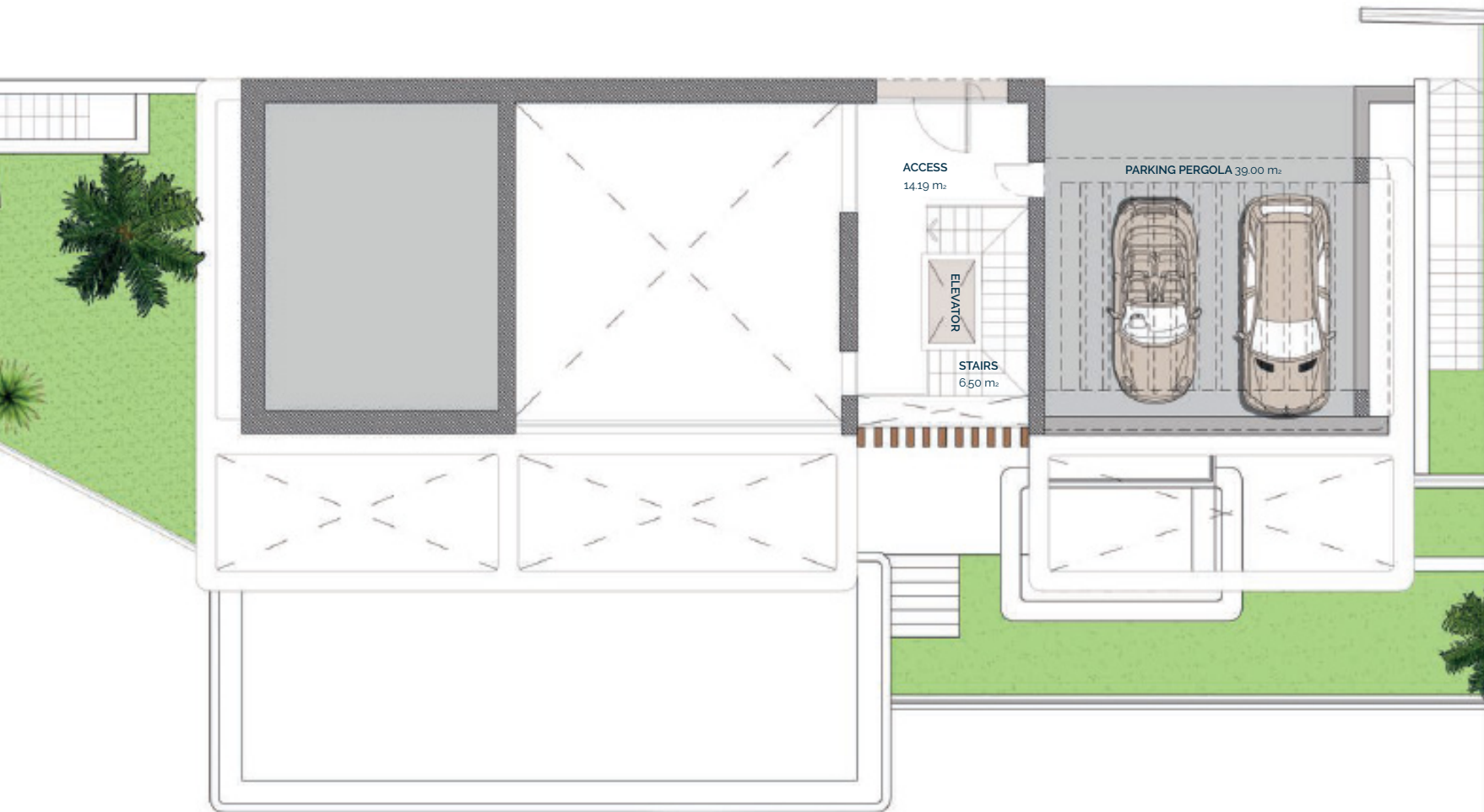
PLOT 1.337,00 m²

GARDEN	155,25 m ²
SWIMMING POOL	56,43 m ²

TOTAL USEFUL AREA DECREE 495,94 m²

218/2005

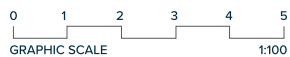
These images are not contractual but only for illustrative purposes. The images are subject to technical, legal or commercial modifications approved by the project management or the competent authority. The 3D images corresponding to the facades, common elements, and the rest of the spaces are merely indicative and will be subject to verification or Modification in the technical projects. The furniture of the 3D images is not included and the equipment of the villas will be indicated in the corresponding building and quality specifications. The energy certification corresponds with the one established in the project in process. All the information and documentation will be provided according to the terms established in the Royal Decree 515/1989 and in the rest of the autonomous or state regulations currently in force that could complement the Mentioned Decree.



VILLA N°7

SECOND FLOOR ENTRANCE

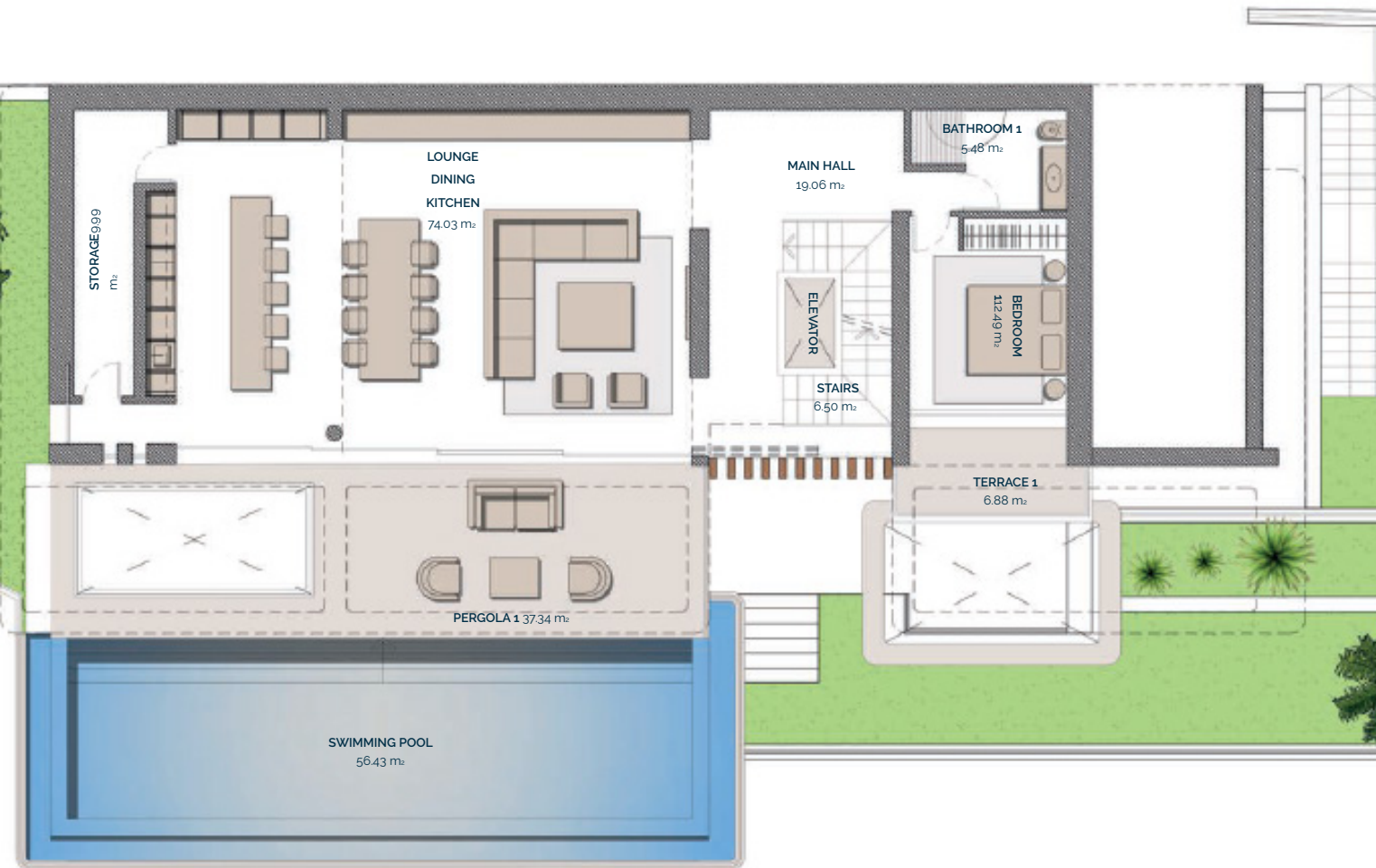
ACCESS	14,19 m ²
STAIRS	6,50 m ²
TOTAL	20,69 m²
PARKING (PERGOLA)	39,00 m ²
TOTAL	39,00 m²



Entrance

2
1
0
-1

These images are not contractual but only for illustrative purposes. The images are subject to technical, legal or commercial modifications approved by the project management or the competent authority. The 3D images corresponding to the facades, common elements, and the rest of the spaces are merely indicative and will be subject to verification or Modification in the technical projects. The furniture of the 3D images is not included and the equipment of the villas will be indicated in the corresponding building and quality specifications. The energy certification corresponds with the one established in the project in process. All the information and documentation will be provided according to the terms established in the Royal Decree 515/1989 and in the rest of the autonomous or state regulations currently in force that could complement the Mentioned Decree.



VILLA N°7

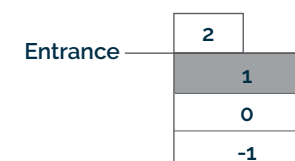
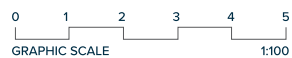
FIRST FLOOR

LIVING AREA

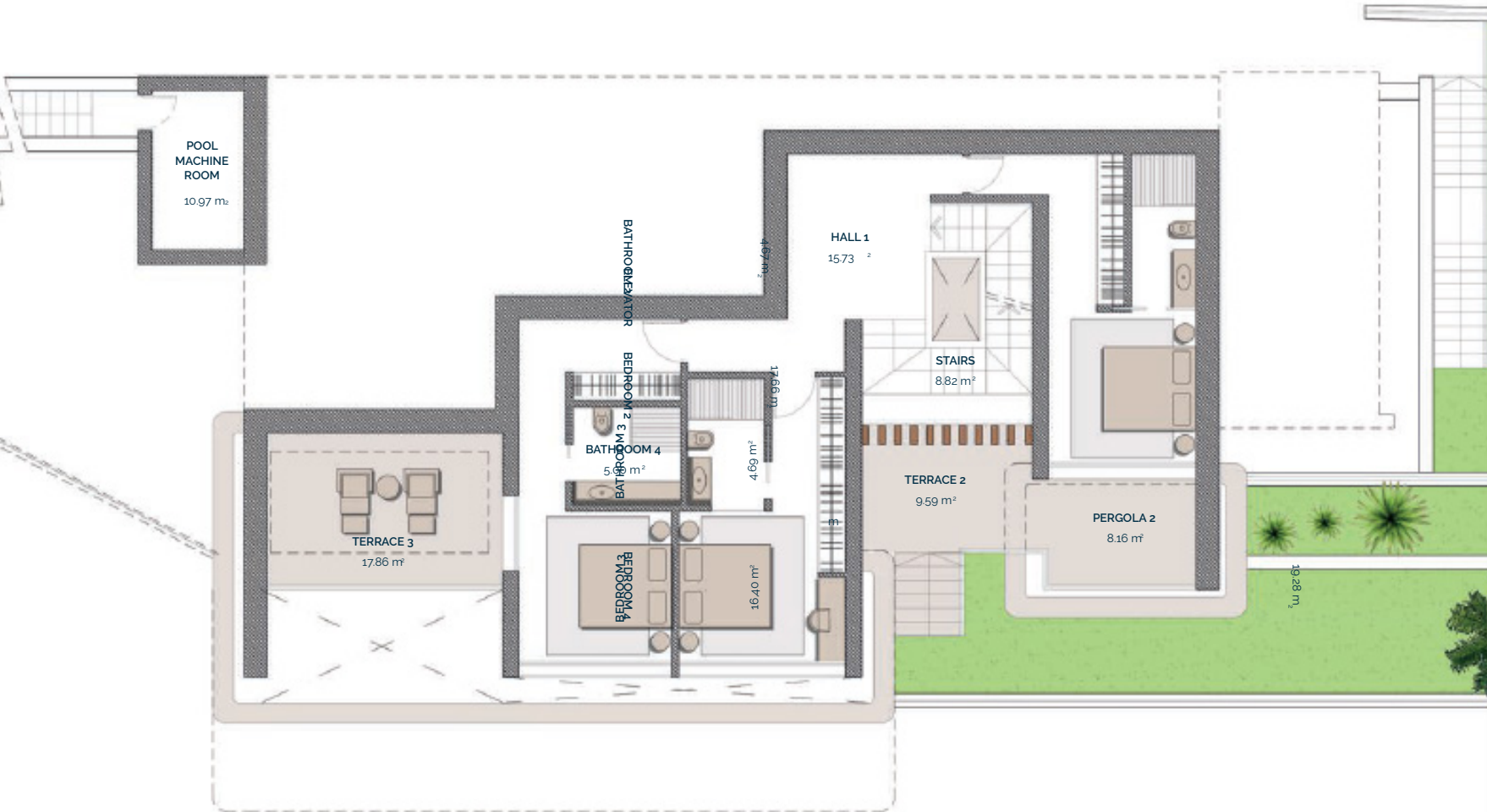
MAIN HALL	19,06 m ²
STAIRS	6,50 m ²
LOUNGE- DINING-KITCHEN	74,03 m ²
BATHROOM 1	5,48 m ²
BEDROOM 1	12,49 m ²
STORAGE	9,99 m ²
TOTAL	127,55 m²

PERGOLAS & TERRACES

TERRACE 1	6,88 m ²
PERGOLA 1	37,34 m ²
TOTAL	44,22 m²



These images are not contractual but only for illustrative purposes. The images are subject to technical, legal or commercial modifications approved by the project management or the competent authority. The 3D images corresponding to the facades, common elements, and the rest of the spaces are merely indicative and will be subject to verification or Modification in the technical projects. The furniture of the 3D images is not included and the equipment of the villas will be indicated in the corresponding building and quality specifications. The energy certification corresponds with the one established in the project in process. All the information and documentation will be provided according to the terms established in the Royal Decree 515/1989 and in the rest of the autonomous or state regulations currently in force that could complement the Mentioned Decree.



VILLA N°7 GROUND FLOOR

BEDROOMS

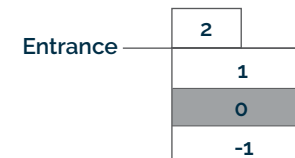
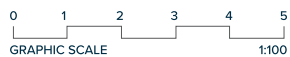
HALL 1	15,73 m ²
STAIRS	8,82 m ²
BATHROOM 2	4,67 m ²
BEDROOM 2	17,66 m ²
BATHROOM 3	4,69 m ²
BEDROOM 3	16,40 m ²
BATHROOM 4	5,00 m ²
BEDROOM 4	19,28 m ²

TOTAL 92,25 m²

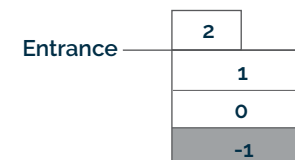
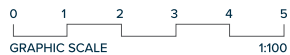
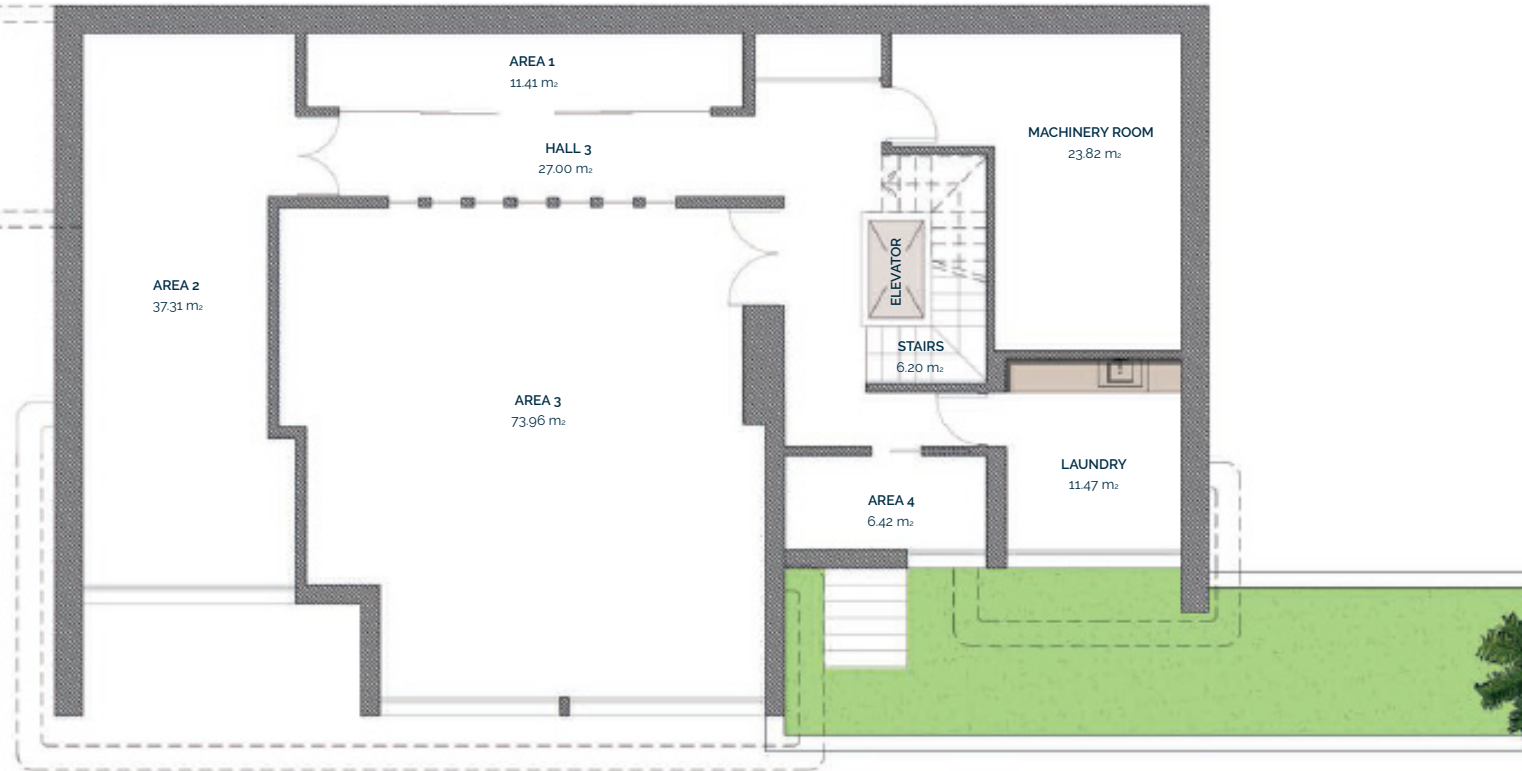
PERGOLAS & TERRACES

PERGOLA 2	8,16 m ²
TERRACE 2	9,59 m ²
TERRACE 3	17,86 m ²
POOL MACHINE ROOM	10,97 m ²

TOTAL 46,13 m²



These images are not contractual but only for illustrative purposes. The images are subject to technical, legal or commercial modifications approved by the project management or the competent authority. The 3D images corresponding to the facades, common elements, and the rest of the spaces are merely indicative and will be subject to verification or Modification in the technical projects. The furniture of the 3D images is not included and the equipment of the villas will be indicated in the corresponding building and quality specifications. The energy certification corresponds with the one established in the project in process. All the information and documentation will be provided according to the terms established in the Royal Decree 515/1989 and in the rest of the autonomous or state regulations currently in force that could complement the Mentioned Decree.

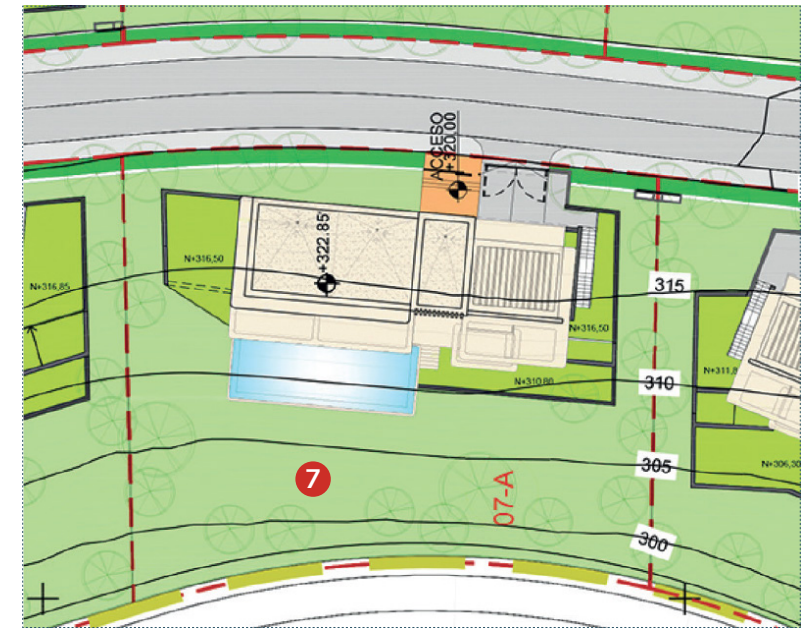
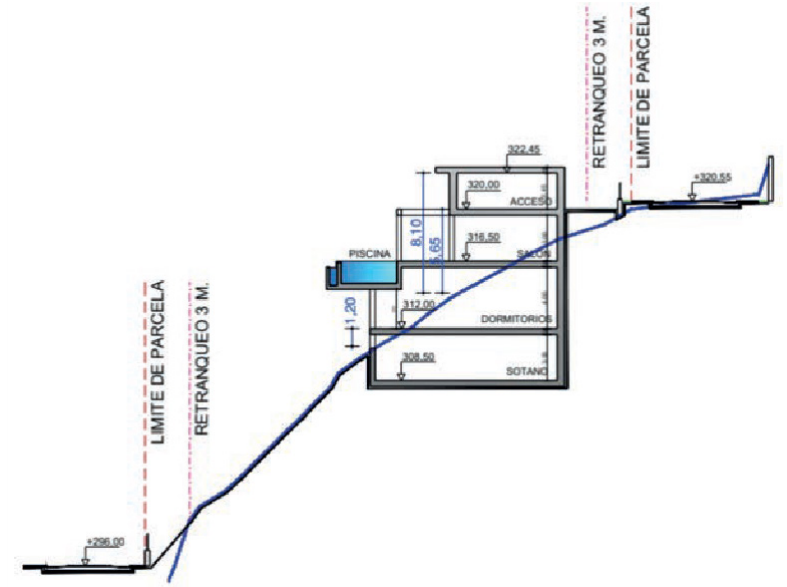


VILLA N°7

BASEMENT

HALL 3	27,00 m ²
AREA 1	11,41 m ²
AREA 2	37,31 m ²
AREA 3	73,96 m ²
AREA 4	6,42 m ²
STAIRS	6,20 m ²
MACHINERY ROOM	23,82 m ²
LAUNDRY	11,47 m ²
PATIO (LIFT)	1,80 m ²
TOTAL	199,39 m²

These images are not contractual but only for illustrative purposes. The images are subject to technical, legal or commercial modifications approved by the project management or the competent authority. The 3D images corresponding to the facades, common elements, and the rest of the spaces are merely indicative and will be subject to verification or Modification in the technical projects. The furniture of the 3D images is not included and the equipment of the villas will be indicated in the corresponding building and quality specifications. The energy certification corresponds with the one established in the project in process. All the information and documentation will be provided according to the terms established in the Royal Decree 515/1989 and in the rest of the autonomous or state regulations currently in force that could complement the Mentioned Decree.





An aerial photograph of a coastal town at sunset. The sky is a mix of blue and orange, with wispy clouds. In the background, there are mountains. The town below is densely packed with buildings and trees, with a large body of water visible in the distance.

18 INDIVIDUALLY DESIGNED SUSTAINABLE VILLAS

VILLA
N°17

VILLA N°17

Villa N°17 sits on a south-southwest facing plot, and enjoys magnificent views straight across the Mediterranean Sea to the African coastline.

The villa has plenty of outside living space with terraces surrounding the main living area, making the most of the year-round warm climate. The garden can easily accommodate an organic vegetable garden, if so desired. In key parts of the villa the windows disappear into the walls, framing the undisturbed, panoramic views. There are three spacious ensuite bedrooms, two of which have their own terraces. The Master Suite is designed along the lines of a 5-star hotel suite with its own lounge area, fireplace and walk-in wardrobe. Built over three floors with a large basement that can be customised to requirements, this is a wonderful home.





VILLA N°17

GROUND FLOOR	112,81 m ²
FIRST FLOOR	143,18 m ²
BASEMENT	276,30 m ²
TOTAL	532,29 m²

PORCHES	3,29 m ²
TERRACES	75,12 m ²
PERGOLAS	82,64 m ²
CARPORT	39,33 m ²
COMMON AREA	8,70 m ²
TOTAL	741,37 m²

PLOT **3.220,00 m²**

GARDEN 238,97 m²

SWIMMING POOL 56,54 m²

TOTAL USEFUL AREA DECREE **501,17 m²**
218/2005

These images are not contractual but only for illustrative purposes. The images are subject to technical, legal or commercial modifications approved by the project management or the competent authority. The 3D images corresponding to the facades, common elements, and the rest of the spaces are merely indicative and will be subject to verification or Modification in the technical projects. The furniture of the 3D images is not included and the equipment of the villas will be indicated in the corresponding building and quality specifications. The energy certification corresponds with the one established in the project in process. All the information and documentation will be provided according to the terms established in the Royal Decree 515/1989 and in the rest of the autonomous or state regulations currently in force that could complement the Mentioned Decree.

VILLA N°17

GROUND FLOOR

LIVING AREA

HALL	16.55 m ²
STAIRS	6.50 m ²
LOUNGE-DINING-KITCHEN	83.39 m ²
BATHROOM 3	5.65 m ²
BEDROOM 3	12.58 m ²
TOTAL	124,67 m²

PERGOLAS & TERRACES

PORCH ACCESS	3.29 m ²
PARKING (PERGOLA)	39.01 m ²
TERRACE 1	8.52 m ²
PERGOLA 1	52.29 m ²
PERGOLA 2	11.51 m ²
TOTAL	114,62 m²



These images are not contractual but only for illustrative purposes. The images are subject to technical, legal or commercial modifications approved by the project management or the competent authority. The 3D images corresponding to the facades, common elements, and the rest of the spaces are merely indicative and will be subject to verification or Modification in the technical projects. The furniture of the 3D images is not included and the equipment of the villas will be indicated in the corresponding building and quality specifications. The energy certification corresponds with the one established in the project in process. All the information and documentation will be provided according to the terms established in the Royal Decree 515/1989 and in the rest of the autonomous or state regulations currently in force that could complement the Mentioned Decree.



VILLA N°17

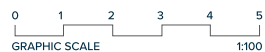
FIRST FLOOR

BEDROOMS

HALL 1	16,97 m ₂
STAIRS	6,50 m ₂
BATHROOM 1	5,23 m ₂
BEDROOM 1	13,94 m ₂
BATHROOM 2	9,84 m ₂
BEDROOM 2	47,98 m ₂
TOTAL	100,46 m₂

PERGOLAS & TERRACES

TERRACE 2	3,00 m ₂
TERRACE 3	29,73 m ₂
TOTAL	32,73 m₂



Entrance

1
0
-1

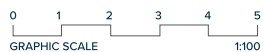
These images are not contractual but only for illustrative purposes. The images are subject to technical, legal or commercial modifications approved by the project management or the competent authority. The 3D images corresponding to the facades, common elements, and the rest of the spaces are merely indicative and will be subject to verification or Modification in the technical projects. The furniture of the 3D images is not included and the equipment of the villas will be indicated in the corresponding building and quality specifications. The energy certification corresponds with the one established in the project in process. All the information and documentation will be provided according to the terms established in the Royal Decree 515/1989 and in the rest of the autonomous or state regulations currently in force that could complement the Mentioned Decree.



VILLA N°17

BASEMENT

HALL 2	14,28 m ²
AREA 1	17,13 m ²
AREA 2	36,67 m ²
AREA 3	63,59 m ²
AREA 4	6,16 m ²
AREA 5	31,26 m ²
LAUNDRY	3,79 m ²
POOL MACHINE ROOM	17,68 m ²
MACHINERY ROOM	16,89 m ²
STAIRS	4,77 m ²
PATIO	1,80 m ²
TOTAL	214,02 m²



Entrance

1
0
-1

These images are not contractual but only for illustrative purposes. The images are subject to technical, legal or commercial modifications approved by the project management or the competent authority. The 3D images corresponding to the facades, common elements, and the rest of the spaces are merely indicative and will be subject to verification or Modification in the technical projects. The furniture of the 3D images is not included and the equipment of the villas will be indicated in the corresponding building and quality specifications. The energy certification corresponds with the one established in the project in process. All the information and documentation will be provided according to the terms established in the Royal Decree 515/1989 and in the rest of the autonomous or state regulations currently in force that could complement the Mentioned Decree.

VILLA N°17

