

CASA PUEBLO 1
PLANTA BAJA

3 DORMITORIOS - 3,5 BAÑOS

SUP. PLANTA ALTA	121.00 m ²
SUP. PLANTA BAJA	127.00 m ²
SUP. PLANTA SÓTANO	123.00 m ²
TOTAL SUP. VIVIENDA:	371.00 m²
SUP. TERRAZA	67.00 - 124.00 m ²
SUP. PISCINA + JARDÍN	72.00 - 335.00 m ²
SUP. PARCELA	267.56 - 558.13 m ²

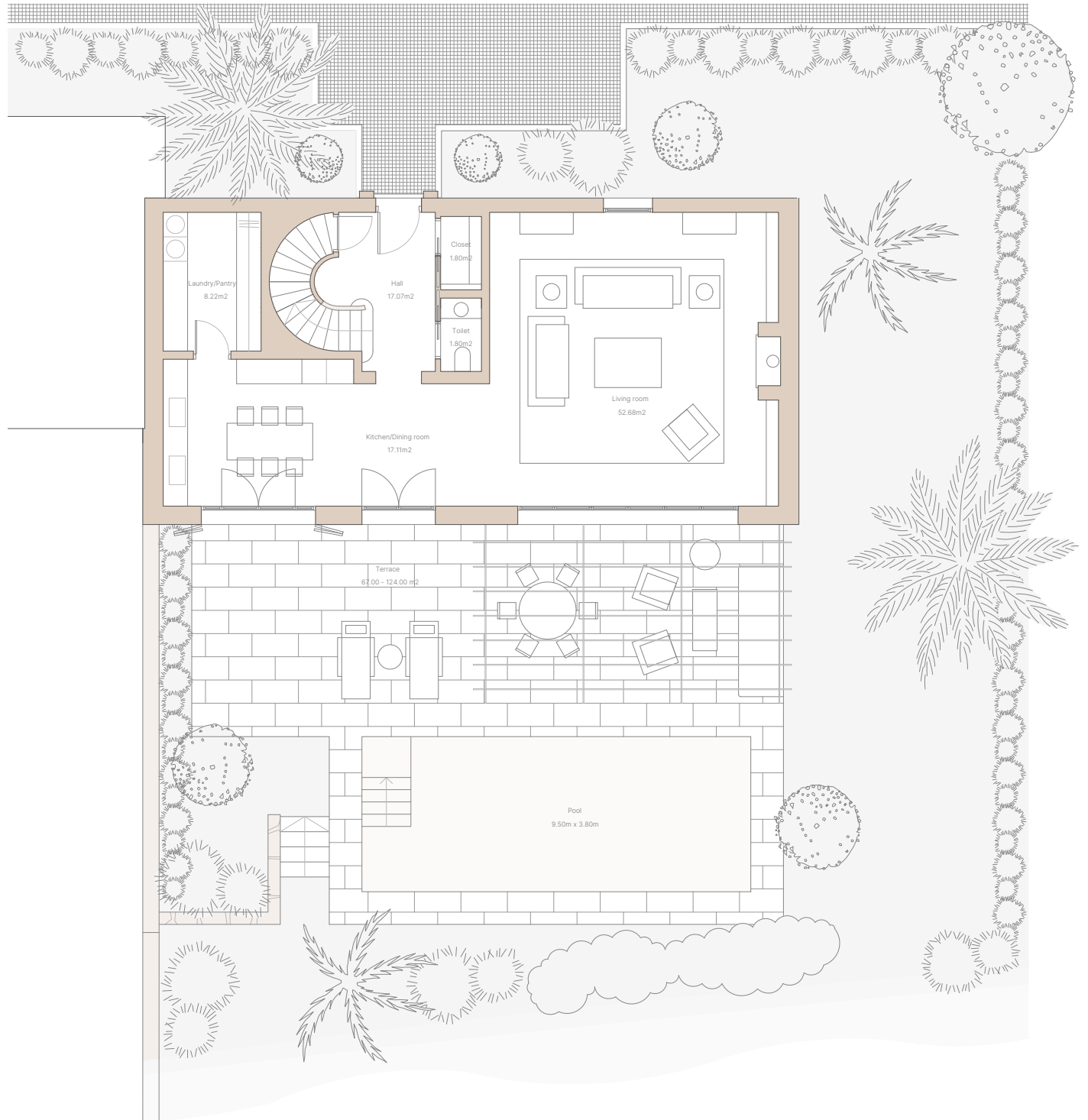
2 PLAZAS DE APARCAMIENTO Y TRASTERO

CASA PUEBLO 1
GROUND FLOOR

3 BEDROOMS - 3,5 BATHROOMS

FIRST FLOOR AREA:	121.00 m ²
GROUND FLOOR AREA:	127.00 m ²
BASEMENT FLOOR AREA:	123.00 m ²
TOTAL AREA:	371.00 m²
TERRACE	67.00 - 124.00 m ²
POOL + GARDEN AREA:	72.00 - 335.00 m ²
PLOT AREA:	267.56 - 558.13 m ²

2 PARKING SPACES AND STORAGE ROOM





CASA PUEBLO 1
PLANTA ALTA Y SÓTANO

3 DORMITORIOS - 3,5 BAÑOS

SUP. PLANTA ALTA	121.00 m ²
SUP. PLANTA BAJA	127.00 m ²
SUP. PLANTA SÓTANO	123.00 m ²
TOTAL SUP. VIVIENDA:	371.00 m²
SUP. TERRAZA	67.00 - 124.00 m ²
SUP. PISCINA + JARDÍN	72.00 - 335.00 m ²
SUP. PARCELA	267.56 - 558.13 m ²

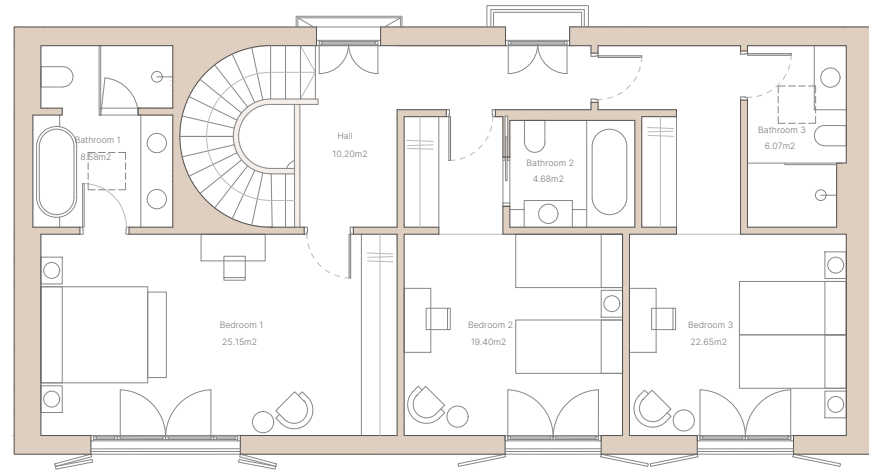
2 PLAZAS DE APARCAMIENTO Y TRASTERO

CASA PUEBLO 1
FIRST FLOOR AND BASEMENT

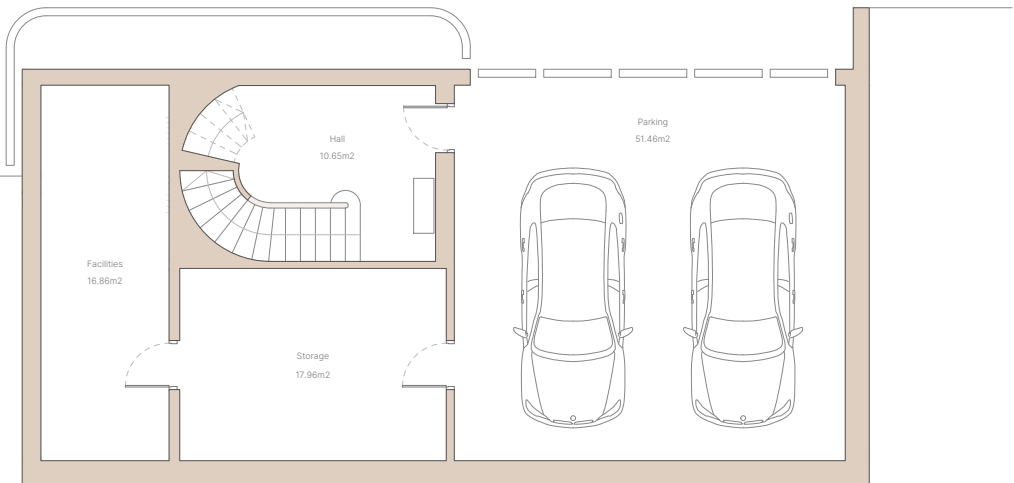
3 BEDROOMS - 3,5 BATHROOMS

FIRST FLOOR AREA:	121.00 m ²
GROUND FLOOR AREA:	127.00 m ²
BASEMENT FLOOR AREA:	123.00 m ²
TOTAL AREA:	371.00 m²
TERRACE	67.00 - 124.00 m ²
POOL + GARDEN AREA:	72.00 - 335.00 m ²
PLOT AREA:	267.56 - 558.13 m ²

2 PARKING SPACES AND STORAGE ROOM



PLANTA ALTA
FIRST FLOOR



PLANTA SÓTANO
BASEMENT



CASA PUEBLO 2
PLANTA BAJA

3 DORMITORIOS - 3,5 BAÑOS

SUP. PLANTA ALTA	119.34 m ²
SUP. PLANTA BAJA	125.34 m ²
SUP. PLANTA SÓTANO	120.79 m ²
TOTAL SUP. VIVIENDA:	365.47 m²
SUP. TERRAZA	67.00 - 124.00 m ²
SUP. PISCINA + JARDÍN	72.00 - 335.00 m ²
SUP. PARCELA	267.56 - 558.13 m ²

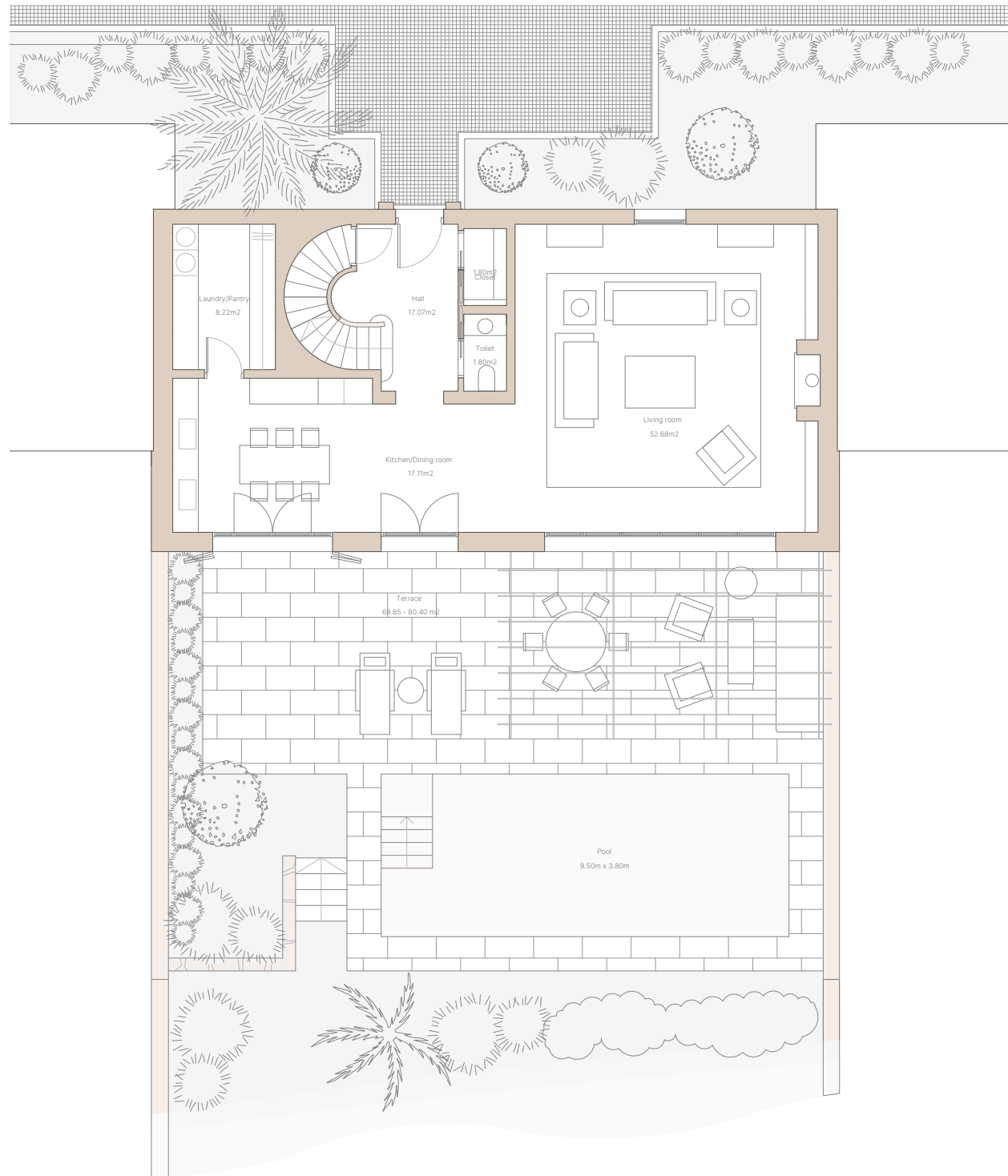
2 PLAZAS DE APARCAMIENTO Y TRASTERO

CASA PUEBLO 2
GROUND FLOOR

3 BEDROOMS - 3,5 BATHROOMS

FIRST FLOOR AREA:	119.34 m ²
GROUND FLOOR AREA:	125.34 m ²
BASEMENT FLOOR AREA:	120.79 m ²
TOTAL AREA:	365.47 m²
TERRACE	67.00 - 124.00 m ²
POOL + GARDEN AREA:	72.00 - 335.00 m ²
PLOT AREA:	267.56 - 558.13 m ²

2 PARKING SPACES AND STORAGE ROOM





CASA PUEBLO 2
PLANTA ALTA Y SÓTANO

3 DORMITORIOS - 3,5 BAÑOS

SUP. PLANTA ALTA	119.34 m ²
SUP. PLANTA BAJA	125.34 m ²
SUP. PLANTA SÓTANO	120.79 m ²
TOTAL SUP. VIVIENDA:	365.47 m²
SUP. TERRAZA	67.00 - 124.00 m ²
SUP. PISCINA + JARDÍN	72.00 - 335.00 m ²
SUP. PARCELA	267.56 - 558.13 m ²

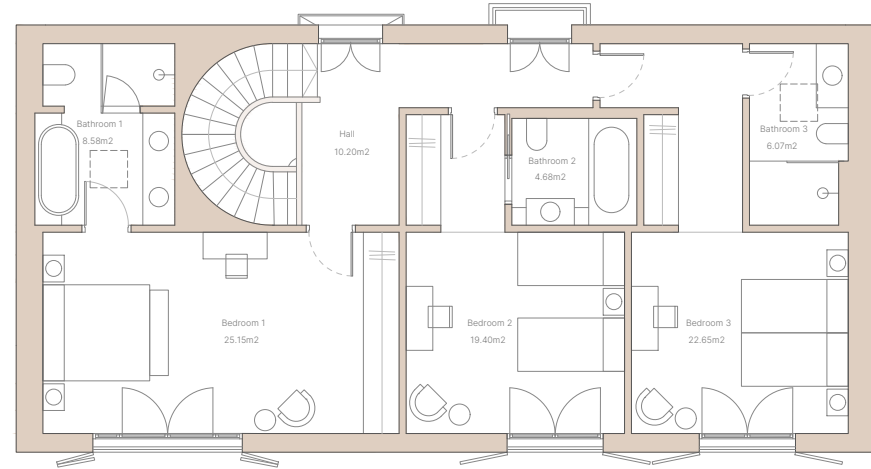
2 PLAZAS DE APARCAMIENTO Y TRASTERO

CASA PUEBLO 2
FIRST FLOOR AND BASEMENT

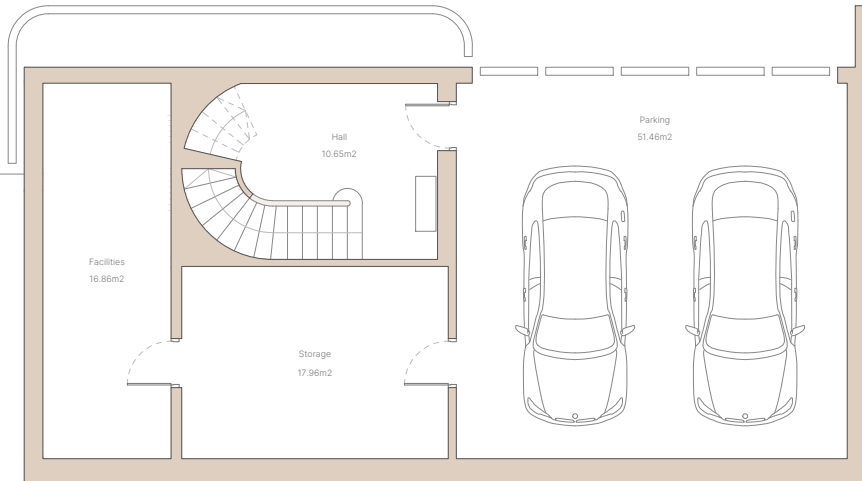
3 BEDROOMS - 3,5 BATHROOMS

FIRST FLOOR AREA:	119.34 m ²
GROUND FLOOR AREA:	125.34 m ²
BASEMENT FLOOR AREA:	120.79 m ²
TOTAL AREA:	365.47 m²
TERRACE	67.00 - 124.00 m ²
POOL + GARDEN AREA:	72.00 - 335.00 m ²
PLOT AREA:	267.56 - 558.13 m ²

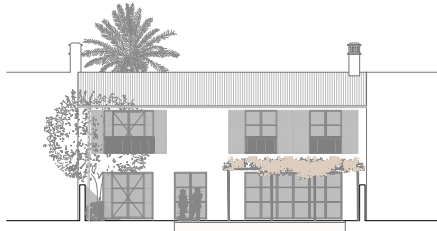
2 PARKING SPACES AND STORAGE ROOM



PLANTA ALTA
FIRST FLOOR



PLANTA SÓTANO
BASEMENT



CASA PUEBLO 3
PLANTA BAJA

3 DORMITORIOS - 3,5 BAÑOS

SUP. PLANTA ALTA	122.64 m ²
SUP. PLANTA BAJA	128.64 m ²
SUP. PLANTA SÓTANO	154.98 m ²
TOTAL SUP. VIVIENDA:	406.26 m²
SUP. TERRAZA	67.00 - 124.00 m ²
SUP. PISCINA + JARDÍN	72.00 - 335.00 m ²
SUP. PARCELA	267.56 - 558.13 m ²

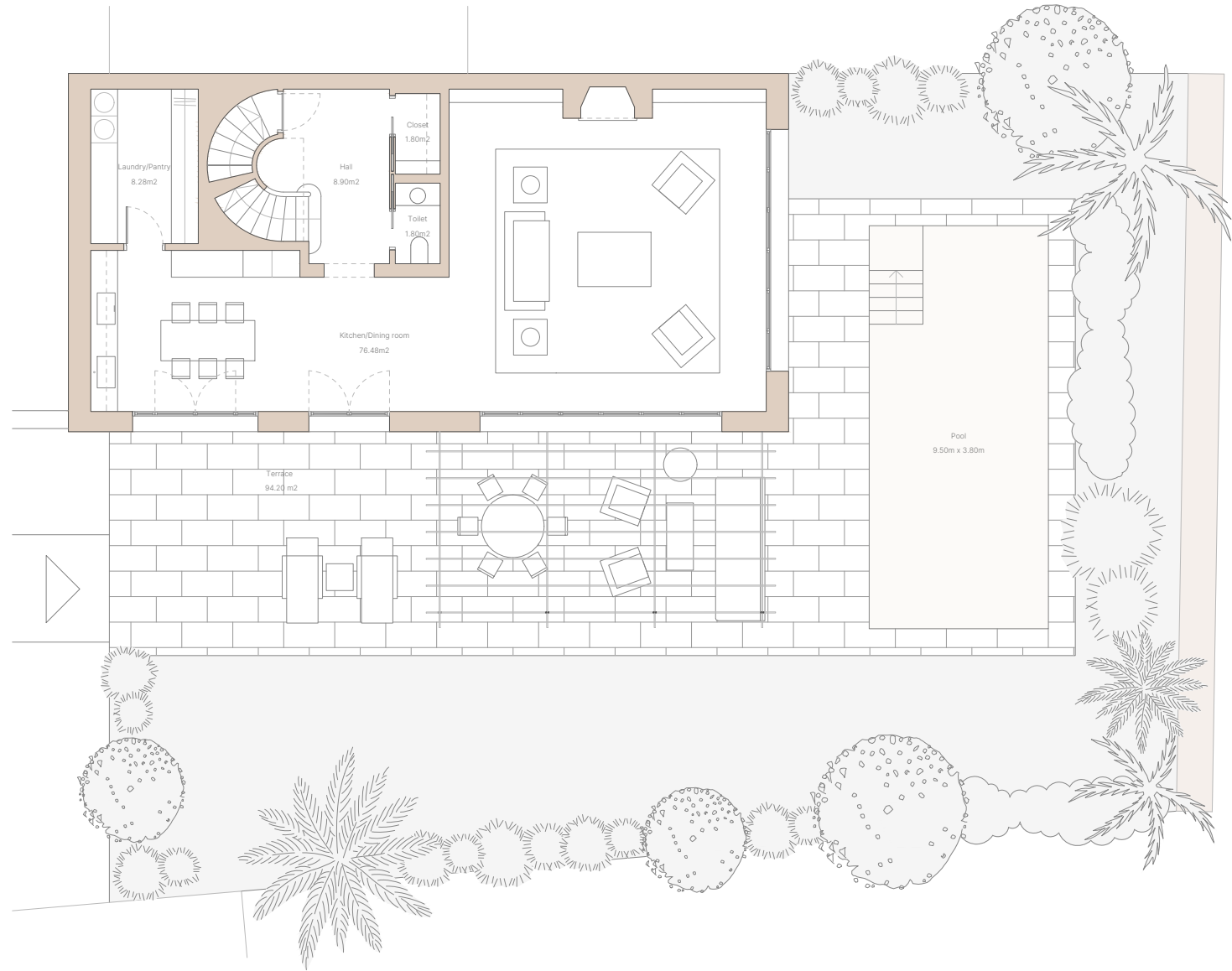
2 PLAZAS DE APARCAMIENTO Y TRASTERO

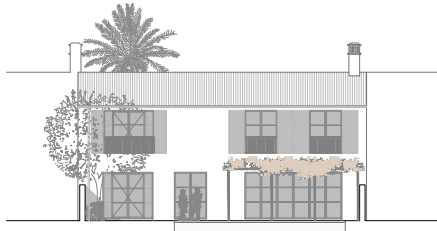
CASA PUEBLO 3
GROUND FLOOR

3 BEDROOMS - 3,5 BATHROOMS

FIRST FLOOR AREA:	122.64 m ²
GROUND FLOOR AREA:	128.64 m ²
BASEMENT FLOOR AREA:	154.98 m ²
TOTAL AREA:	406.26 m²
TERRACE	67.00 - 124.00 m ²
POOL + GARDEN AREA:	72.00 - 335.00 m ²
PLOT AREA:	267.56 - 558.13 m ²

2 PARKING SPACES AND STORAGE ROOM





CASA PUEBLO 3
PLANTA ALTA Y SÓTANO

3 DORMITORIOS - 3,5 BAÑOS

SUP. PLANTA ALTA	122.64 m ²
SUP. PLANTA BAJA	128.64 m ²
SUP. PLANTA SÓTANO	154.98 m ²
TOTAL SUP. VIVIENDA:	406.26 m²
SUP. TERRAZA	67.00 - 124.00 m ²
SUP. PISCINA + JARDÍN	72.00 - 335.00 m ²
SUP. PARCELA	267.56 - 558.13 m ²

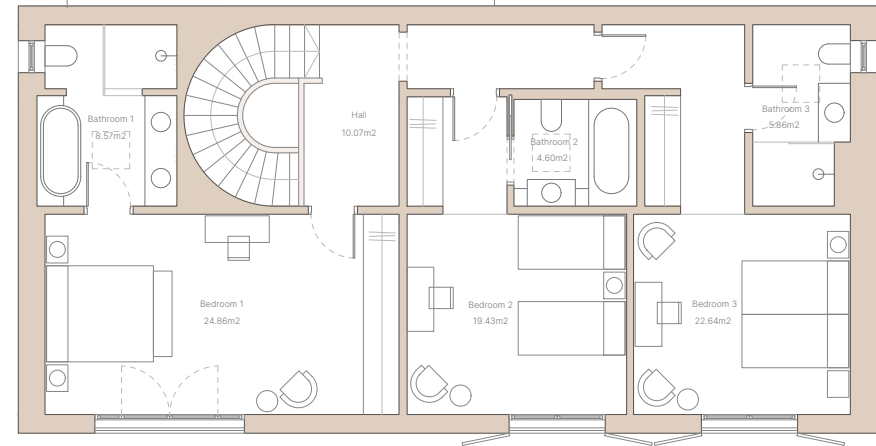
2 PLAZAS DE APARCAMIENTO Y TRASTERO

CASA PUEBLO 3
FIRST FLOOR AND BASEMENT

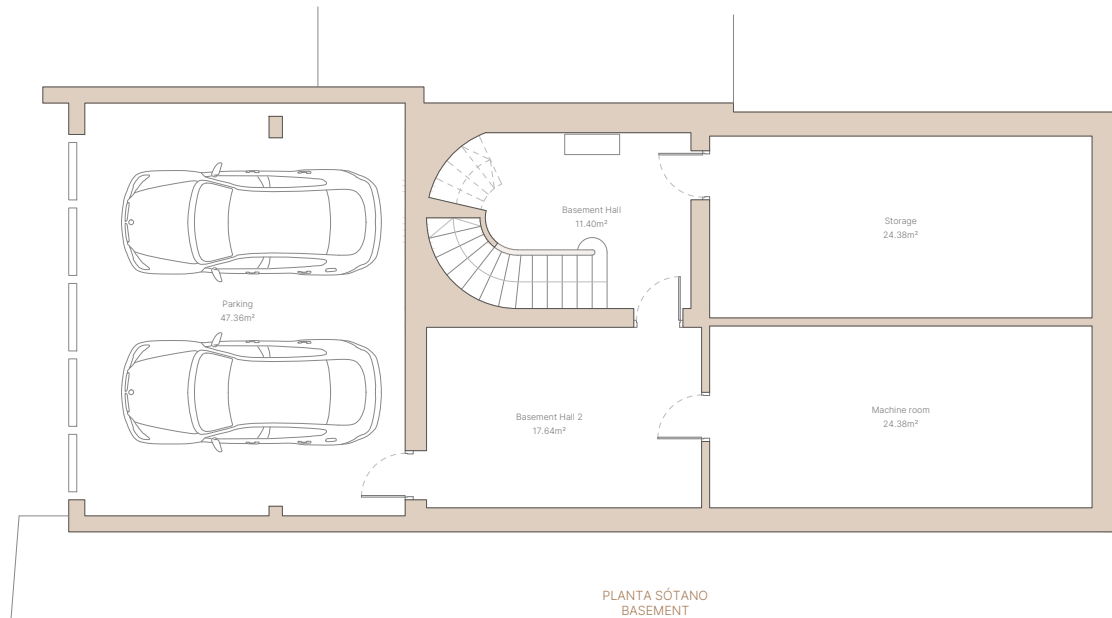
3 BEDROOMS - 3,5 BATHROOMS

FIRST FLOOR AREA:	122.64 m ²
GROUND FLOOR AREA:	128.64 m ²
BASEMENT FLOOR AREA:	154.98 m ²
TOTAL AREA:	406.26 m²
TERRACE	67.00 - 124.00 m ²
POOL + GARDEN AREA:	72.00 - 335.00 m ²
PLOT AREA:	267.56 - 558.13 m ²

2 PARKING SPACES AND STORAGE ROOM



PLANTA ALTA
FIRST FLOOR



PLANTA SÓTANO
BASEMENT

LA LOMA DE CORTESIN



CORTIJO 1 PLANTA BAJA

3 DORMITORIOS - 3,5 BAÑOS

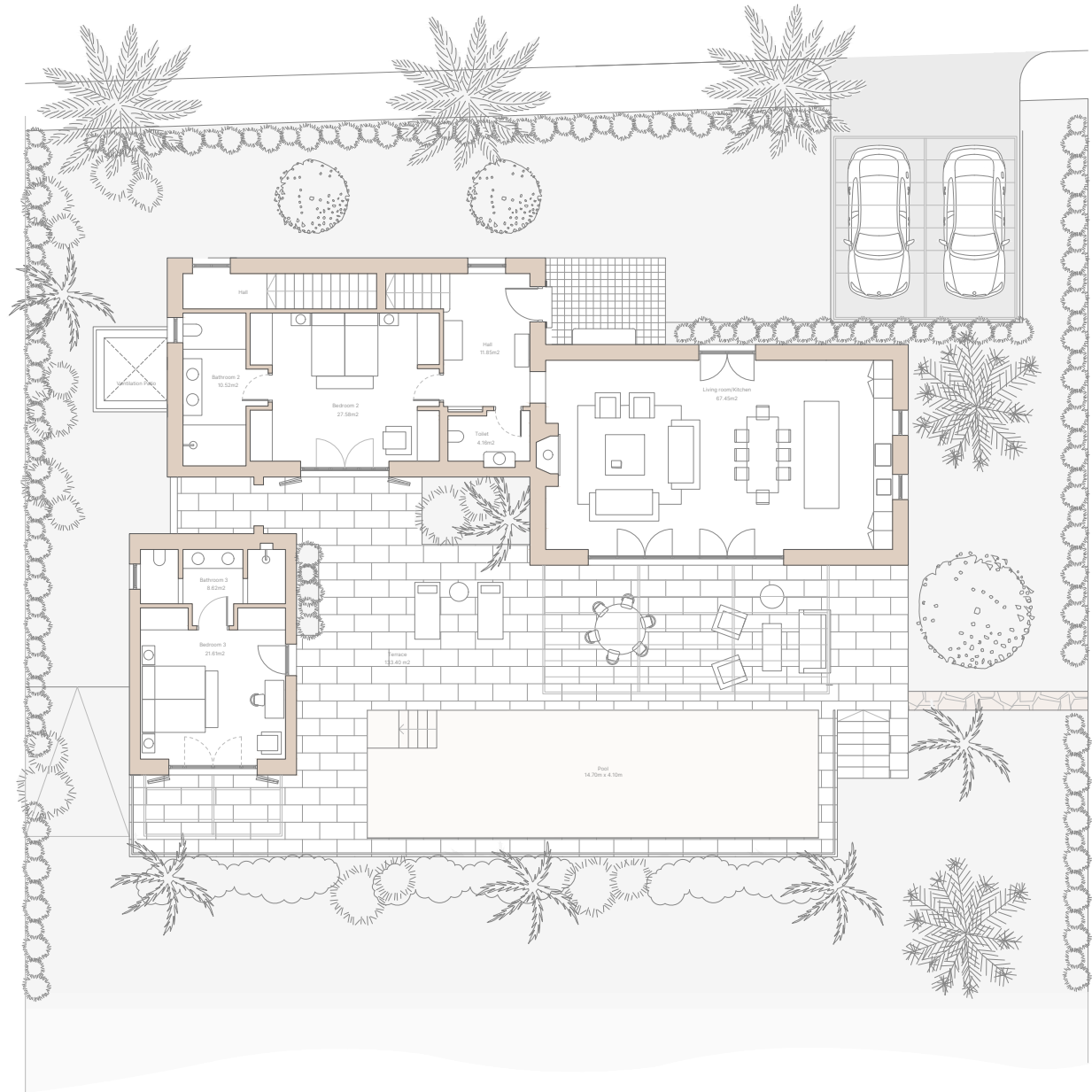
SUP. PLANTA ALTA:	74.00 m ²
SUP. PLANTA BAJA:	206.40 m ²
SUP. PLANTA SÓTANO:	80.80 m ²
TOTAL SUP. VIVIENDA:	361.20 m²
SUP. TERRAZA	133.40 m ²
SUP. PISCINA + JARDÍN	466.20 - 931.13 m ²
SUP. PARCELA	806.01 - 1,270.93 m ²

2 PLAZAS DE APARCAMIENTO Y TRASTERO

CORTIJO 1 GROUND FLOOR

FIRST FLOOR AREA	74.00 m ²
GROUND FLOOR AREA	206.40 m ²
BASEMENT FLOOR AREA	80.80 m ²
TOTAL AREA	361.20 m²
TERRACE	133.40 m ²
POOL + GARDEN AREA:	466.20 - 931.13 m ²
PLOT AREA:	806.01 - 1,270.93 m ²

2 PARKING SPACES AND STORAGE ROOM





CORTIJO 1
PLANTA ALTA Y SÓTANO

3 DORMITORIOS - 3,5 BAÑOS

SUP. PLANTA ALTA:	74.00 m ²
SUP. PLANTA BAJA:	206.40 m ²
SUP. PLANTA SÓTANO:	80.80 m ²
TOTAL SUP. VIVIENDA:	361.20 m²
SUP. TERRAZA	133.40 m ²
SUP. PISCINA + JARDÍN	466.20 - 931.13 m ²
SUP. PARCELA	806.01 - 1,270.93 m ²

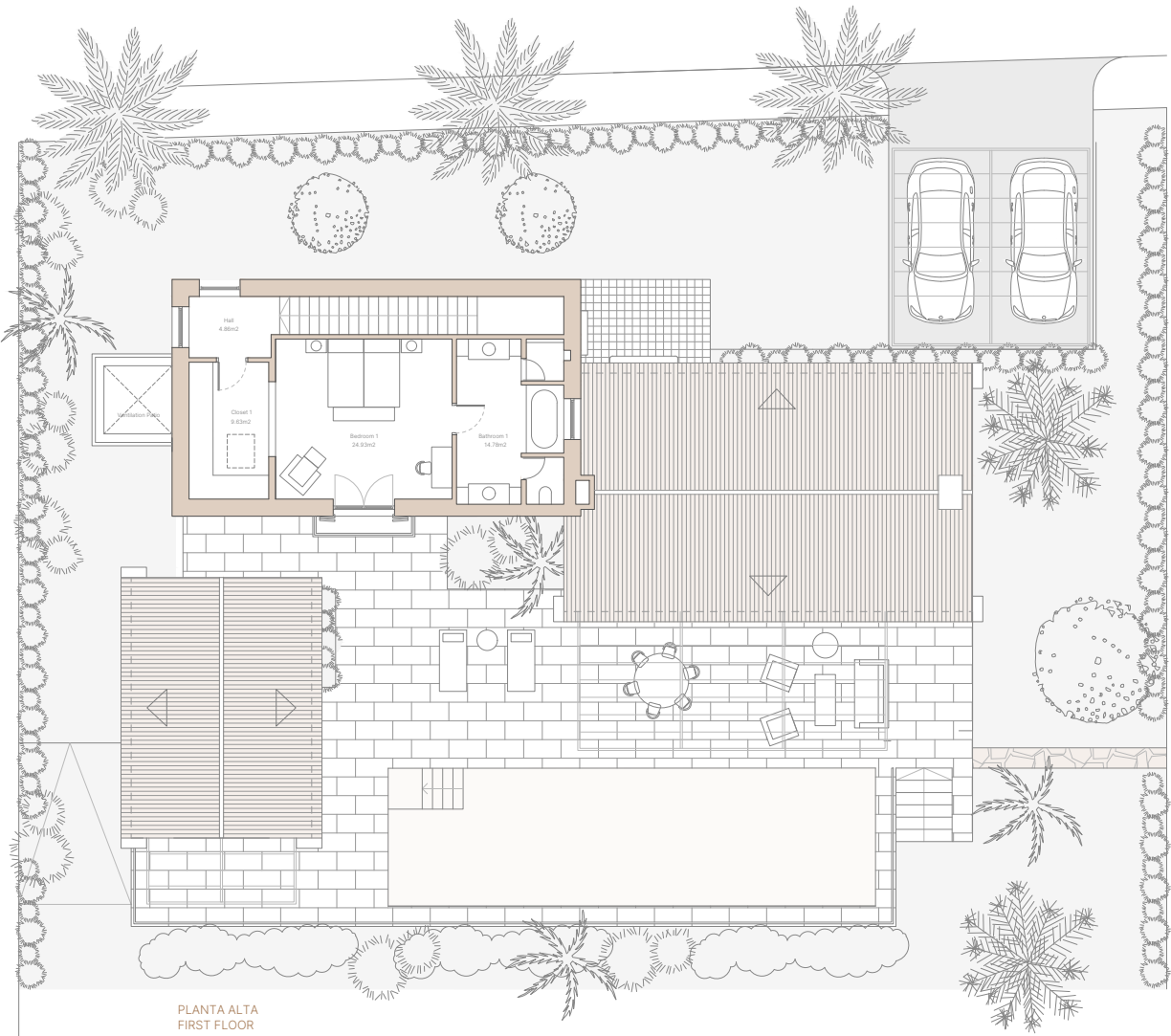
2 PLAZAS DE APARCAMIENTO Y TRASTERO

CORTIJO 1
FIRST FLOOR AND BASEMENT

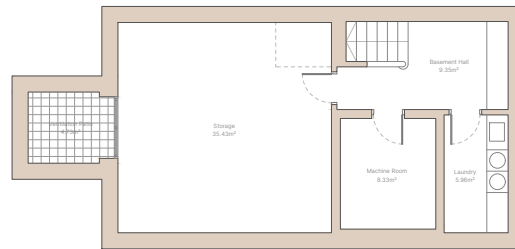
3 BEDROOMS - 3,5 BATHROOMS

FIRST FLOOR AREA	74.00 m ²
GROUND FLOOR AREA	206.40 m ²
BASEMENT FLOOR AREA	80.80 m ²
TOTAL AREA	361.20 m²
TERRACE	133.40 m ²
POOL + GARDEN AREA:	466.20 - 931.13 m ²
PLOT AREA:	806.01 - 1,270.93 m ²

2 PARKING SPACES AND STORAGE ROOM

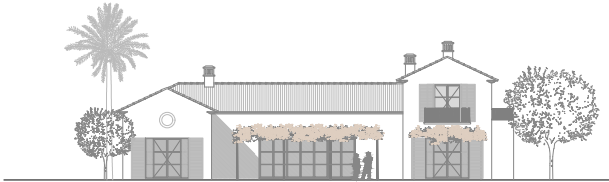


PLANTA ALTA
FIRST FLOOR



PLANTA SÓTANO
BASEMENT





CORTIJO 2
PLANTA BAJA

3 DORMITORIOS - 3,5 BAÑOS

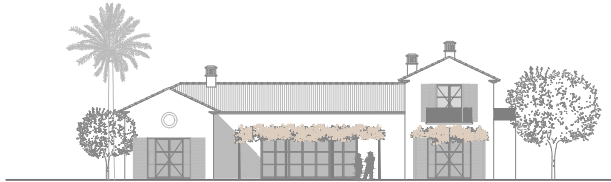
SUP. PLANTA ALTA:	57,00 m ²
SUP. PLANTA BAJA:	206,50 m ²
SUP. PLANTA SÓTANO:	78,50 m ²
TOTAL SUP. VIVIENDA:	342,00 m²
SUP. TERRAZA:	116,60 m ²
SUP. PISCINA + JARDÍN:	548,82 - 1,036,43 m ²
SUPERFICIE PARCELA:	871,93 - 1,359,54 m ²

CORTIJO 2
GROUND FLOOR

3 BEDROOMS - 3,5 BATHROOMS

FIRST FLOOR AREA:	57,00 m ²
GROUND FLOOR AREA:	206,50 m ²
BASEMENT FLOOR AREA:	78,50 m ²
TOTAL AREA	342,00 m²
TERRACE:	116,60 m ²
POOL + GARDEN AREA:	548,82 - 1,036,43 m ²
PLOT AREA:	871,93 - 1,359,54 m ²





CORTIJO 2
PLANTA ALTA Y SÓTANO

3 DORMITORIOS - 3,5 BAÑOS

SUP. PLANTA ALTA:	57,00 m ²
SUP. PLANTA BAJA:	206,50 m ²
SUP. PLANTA SÓTANO:	78,50 m ²
TOTAL SUP. VIVIENDA:	342,00 m²
SUP. TERRAZA	116,60 m ²
SUP. PISCINA + JARDÍN	548,82 - 1,036,43 m ²
SUPERFICIE PARCELA	871,93 - 1,359,54 m ²

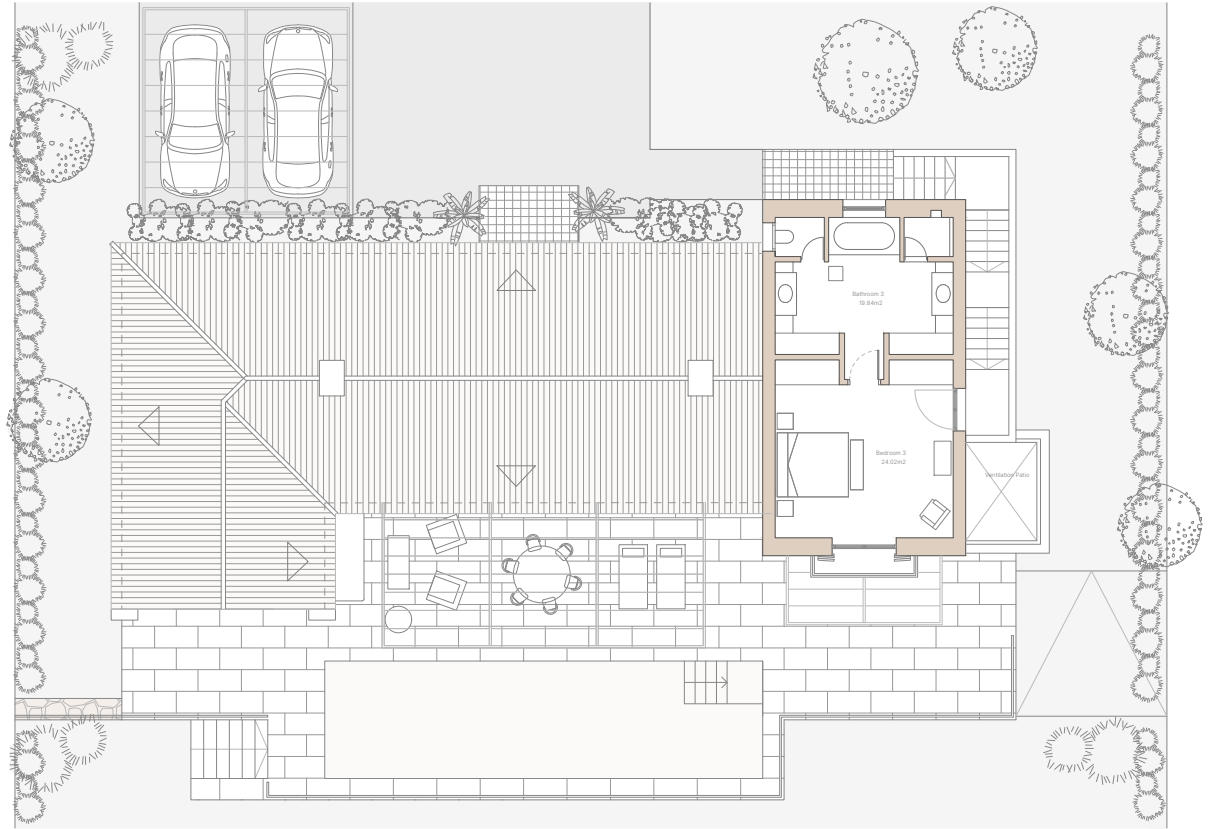
2 PLAZAS DE APARCAMIENTO Y TRASTERO

FIRST FLOOR AND BASEMENT

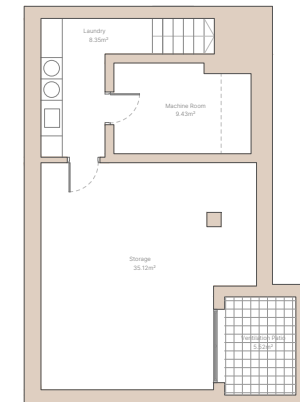
3 BEDROOMS - 3,5 BATHROOMS

FIRST FLOOR AREA	57,00 m ²
GROUND FLOOR AREA	206,50 m ²
BASEMENT FLOOR AREA	78,50 m ²
TOTAL AREA	342,00 m²
TERRACE	116,60 m ²
POOL + GARDEN AREA:	548,82 - 1,036,43 m ²
PLOT AREA	871,93 - 1,359,54 m ²

2 PARKING SPACES AND STORAGE ROOM



PLANTA ALTA
FIRST FLOOR



SÓTANO
BASEMENT